

BERRIDGE **B** **BERRIDGE** MANUFACTURING COMPANY

ARCHITECTURAL METAL ROOF AND WALL SYSTEMS



PRODUCT CATALOG

(800) 669-0009 ▪ WWW.BERRIDGE.COM



A MESSAGE FROM JACK BERRIDGE

SETTING THE ARCHITECTURAL METAL STANDARD

Back in 1970, when I founded the Berridge Manufacturing Company, our goal was to be first in providing our customers with high-quality, innovative architectural metal roof panels. Now, more than four decades later, we have established our role as the most innovative manufacturer in the architectural metal panel industry.

No other company can provide you with the range of products and the depth of service like Berridge. Whether you are a contractor or an architect, Berridge is proud to offer extensive programs to provide customer service and support through our architectural, technical and marketing departments. Coupled with the industry's broadest selection of panels and shingles for every application, on-site forming equipment and our superior warranties,

we are certain that you will find that Berridge meets all of your needs.

Thank you for your business in the past and we look forward to working with you on your next project.

Sincerely,

Jack A. Berridge
Founder



WIDEST INDUSTRY SELECTION OF FACTORY PRODUCTS

THE BERRIDGE LICENSEE TOTAL PROGRAM AND EXCLUSIVE TECHNOLOGY

FULL TESTING, EXTENSIVE WARRANTIES, AND SUPPORT

36 Architectural Metal Products

Available In:

- 24 gauge Galvalume® steel substrate
- Many available in 22 gauge Galvalume® steel and 0.032 and 0.040 aluminum
- 34 standard, premium, or metallic color finishes
- Virtually unlimited custom colors
- Coated on Berridge's continuous coil line using premium PVDF coatings produced in full strength Kynar 500® or Hylar 5000® resin

Exclusive On-Site Fabrication Technology With Berridge Portable Roll Formers And Seamers

Berridge Total Program Benefits Include:

Discounts On:

- Coil, flat sheets, and fabricated product systems
- Watertightness Warranty premiums
- Portable roll former leases
- Accessories

Support Provided For:

- Watertightness Warranty projects
- Technical support
- Marketing support

For more information contact info@Berridge.com.

13 Nationwide Branches

Full Product Testing

Superior Warranty Programs:

- 20 year Watertightness Warranty*
- 40 year Paint Finish Warranty*
- 25 year Galvalume® Material Warranty*

Technical Support

- Shop drawings, calculations, and engineering services

Architectural

- Architectural details, specifications, and full BIM REVIT library

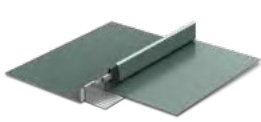
Marketing

- Product and color samples

* Consult www.Berridge.com or the Berridge technical department at wtw@berridge.com for warranty requirements.

CATALOG CONTENTS AND PRODUCT INDEX

4	THE BERRIDGE COMPANY STORY	21	SIMULATED TILE ROOF SYSTEMS
5	BERRIDGE FINISHES AND MATERIAL SPECIFICATIONS	23	SHINGLE SYSTEMS
6	SUSTAINABLE COOL METAL ROOFING	25	WALL, SOFFIT, CEILING AND FASCIA PANEL SYSTEMS
7	BERRIDGE MANUFACTURING COLORS	35	EXPOSED FASTENER PANEL SYSTEMS
8	BERRIDGE PRODUCT APPLICATION AND INDEX	39	SPECIALTY APPLICATION SYSTEMS
9	BERRIDGE TESTING & CERTIFICATIONS SUMMARY CHART	41	ARCHITECTURAL PRIVACY FENCE SYSTEM
10	STANDING SEAM SYSTEMS	42	SPACEFRAME BUILDING SYSTEM
19	ALTERNATIVE SYSTEMS	43	LIGHT GAUGE FRAMING



TEE-PANEL
Page 10



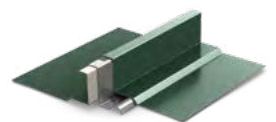
HIGH SEAM TEE-PANEL
Page 12



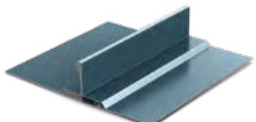
TEE-LOCK PANEL
Page 14



CEE-LOCK PANEL
Page 15



ZEE-LOCK PANEL
Page 16



DOUBLE-LOCK ZEE-LOCK PANEL
Page 18



BATTEN SEAM PANEL
Page 19



BERMUDA PANEL
Page 20



SPANISH TILE
Page 21



S-TILE
Page 22



FISH SCALE SHINGLE
Page 23



VICTORIAN & CLASSIC SHINGLE
Page 24



HS-8 & HS-12 PANELS
Page 25



HR-4 & HR-16 PANEL
Page 26



HC-16 PANEL
Page 27



BR-12 PANEL
Page 28



VEE-PANEL
Page 29



FW-1025 & FW-12 PANELS
Page 30



L-PANEL
Page 31



B-6 PANEL
Page 32



FLUSH SEAM PANEL
Page 33



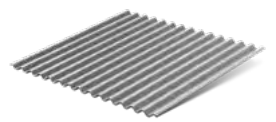
THIN-LINE PANEL
Page 34



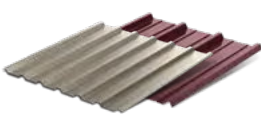
DOUBLE-RIB PANEL
Page 35



DEEP-DECK PANEL
Page 36



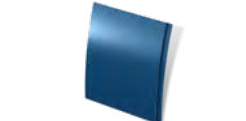
S-DECK PANEL
Page 37



"M" & "R" PANEL
Page 38



FLUTED FASCIA
Page 39



CURVED FLAT SEAM PANEL
Page 40



ARCHITECTURAL PRIVACY FENCE
Page 41



SPACEFRAME & LIGHT GAUGE FRAMING
Page 42-43

THE BERRIDGE MANUFACTURING COMPANY STORY

Since 1970, Berridge Manufacturing Company has provided customers with the industry's highest quality metal roofing and siding products by specializing in the research and development of architectural sheet metal products. Many similar products on the market today were originally designed and developed by the Berridge Manufacturing Company.

Berridge offers 36 products, including popular standing seam options, wall panels, shingles and metal framing. These products are offered in 34 Kynar 500® or Hylar 5000® PVDF Resin-Based Color Finishes in standard, premium and metallic colors and unlimited custom colors. All products are available in 24 gauge steel, with limited availability in 22 gauge steel and 0.032 and 0.040 aluminum for some products.

To assist with on-site architectural panel fabrication and quality control, Berridge provides a unique comprehensive approach to supplying their superior products and services to customers around the world through the Berridge Total Program. The Berridge Total Program offers a full range of precision-tolerance factory set, non-adjustable portable roll forming machines, painted coil, flat sheets, and 33 panel profiles all backed by technical and marketing support. The Total Program presents an unparalleled range of products and depth of service that has placed Berridge at the forefront of the architectural metal panel industry.

In-House Manufacturing Equipment

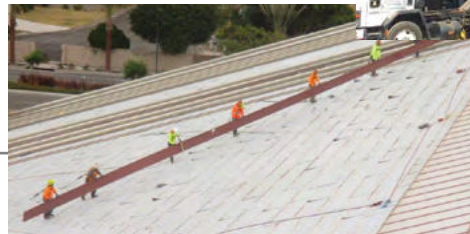
Berridge's modern, high production, equipment provides customers with low cost, top quality products. The in-house, highly specialized manufacturing equipment converts large, bare Galvalume® steel coils into pretreated, prefinished, high quality fabricated architectural sheet metal products. This equipment includes a continuous coil coating paint line, slitting lines, cut-to-length lines, roll formers, mechanical and hydraulic press brakes, punch presses, stamping and bending fixtures, and a variety of special dies. This complete line of in-house equipment not only produces top of the line products at the most competitive prices, but assures prompt delivery as well.



Portable Roll Formers

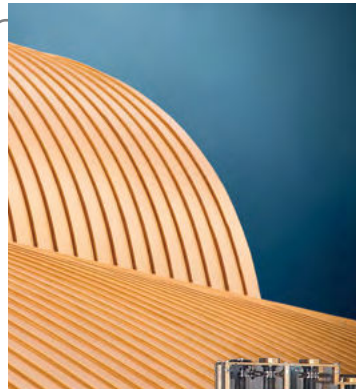
In 1984, Berridge revolutionized the architectural metal panel industry with the introduction of the Model SS-14 Portable Roll Former. This unique machine was designed to roll form continuous length, straight standing seam panels, as well as curved panels. Today, over 10 different panels including standing seam, soffit, and wall panels may be formed using the extensive line of Berridge portable roll formers, thus providing excellent quality control. Contact the Berridge Sales Department at sales@berridge.com for more information about the Model SS-14 and other Berridge portable roll formers.

Right and Below: On-site fabrication of Zee-Lock panels in 160 foot continuous lengths for Great Wolf Lodge in Garden Grove, CA. Zee-Lock panels can be site formed in continuous lengths with the Berridge SP-21 portable roll-former and curved on-site using the Berridge ZC-21 curving machine.



Licensee Program

As a Berridge Portable Roll Former Owner or long-term leasee, "licensees" receive substantial benefits. Some of these extensive benefits include product and additional lease discounts, sales leads and technical support. For more information please contact the Berridge Sales Department at sales@berridge.com.



Left: The Isha Abode of Yoga in McMinnville, TN featuring curved High Seam Tee-Panel in Copper-Cote™.

Below: The Berridge SS-1421 Portable Roll Former forms straight and curved High Seam Tee-Panel standing seam roof panels in continuous lengths to eliminate panel end splices.



BERRIDGE FINISHES AND MATERIAL SPECIFICATIONS

Berridge color finishes applied on Galvalume® steel and aluminum substrates are produced with full strength Kynar 500® or Hylar 5000® resin. Kynar 500® or Hylar 5000® PVDF resin-based color finishes provide superior exterior durability and maximum resistance to ultraviolet radiation. All Berridge color finishes are processed on the Berridge continuous coil coating line in San Antonio, TX.

Berridge Metallic Finishes

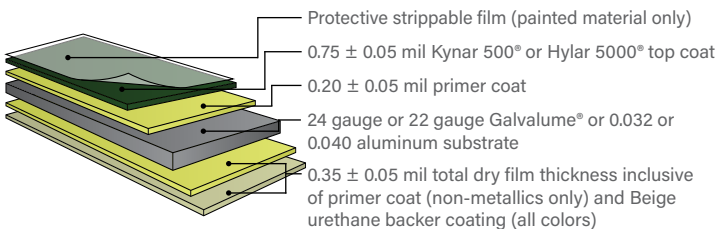
Metallic colors are processed and finished on Berridge's continuous coil coating line. These proprietary finishes are available for all factory products, flat sheets, and coils. Flat sheets and coils in metallic finishes are available to sheet metal companies for fabrication of special profiles, shapes, or flashing. Metallic colors are directional and paint lot sensitive. Large orders should be placed at the same time to avoid mixing paint lots. Berridge Metallic Finishes include:

Copper-Cote™	Antique Copper-Cote
Champagne	Zinc-Cote™
Prewathered Galvalume®	Lead-Cote™

Acrylic-Coated Galvalume®

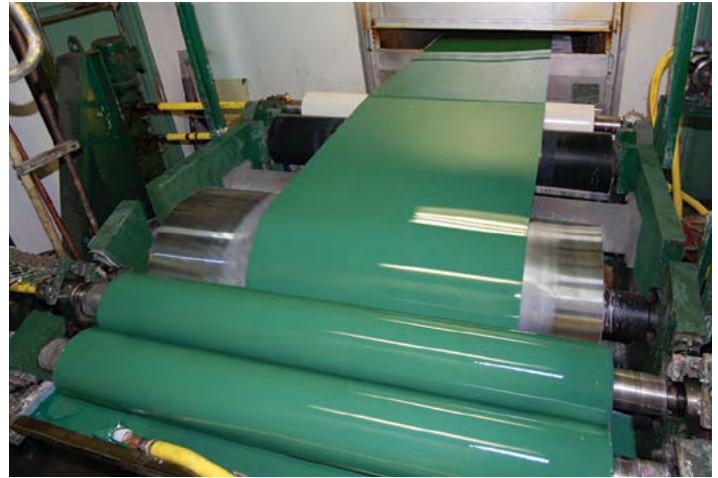
Acrylic-Coated Galvalume® is a coated sheet product that combines the corrosion resistance of Galvalume® steel sheet with a clear acrylic coating that is applied over Galvalume® substrate. The surface treatment is essentially invisible and provides excellent characteristics to enhance the fabrication, performance and aesthetic of the installed Galvalume®. These enhancements include: good roll-formability without the need for oils, excellent transit and field-storage performance without staining, dramatic decrease in finger printing or foot printing during installation, and long-term surface brightness when exposed to the environment. It is applied at the mill by roll coating a uniform, thin film of a water-base acrylic solution onto both surfaces of the sheet.

Coating System



Notes:

1. Custom colors and finishes are available. Please consult Berridge for pricing and lead time.
2. Berridge metallic and premium finishes require a nominal surcharge.
3. Galvalume® is a registered trademark of BIEC International, Inc.
4. Kynar 500® is a registered trademark of Arkema, Inc.
5. Hylar 5000® is a registered trademark of Solvay Solexis.



Berridge owns and operates its own modern continuous coil coating line in San Antonio, Texas, painting both 48" and 42" wide master coils.

Specifications for all 24 & 22 Gauge* Galvalume® and 0.032 & 0.040 Aluminum* Berridge Sheet Metal Products

- A. Prefinished metal shall be aluminum-zinc alloy coated (AZ-50 Galvalume®) steel sheet, 24 gauge or 22 gauge*, ASTM 792, Grade 40, yield strength 40 ksi min. or 3105 alloy aluminum sheet 0.032 or 0.040*, ASTM B209, H14 temper, yield strength 21 ksi min.
- B. Finish shall be full strength Kynar 500® or Hylar 5000® fluoropolymer coating applied by the manufacturer on a continuous coil coating line, with a top side dry film thickness of 0.75 ± 0.05 mil over 0.20 ± 0.05 mil primer coat, to provide a total top side dry film thickness of 0.95 ± 0.10 mil. Bottom side shall be coated with a primer (non-metallics only) and beige urethane coating with a total dry film thickness of 0.35 ± 0.05 mil. Finish shall conform to all tests for adhesion, flexibility, and longevity as specified by the Kynar 500® or Hylar 5000® finish supplier.
- C. Strippable film shall be applied to the top side of all prefinished metal to protect the finish during fabrication, shipping, and field handling. This strippable film MUST be removed immediately before installation.
- D. Acrylic-Coated Galvalume® metal shall be aluminum-zinc alloy coated (AZ-55 Galvalume®) steel sheet, 24 gauge or 22 gauge*, ASTM 792, Grade 40, yield strength 40 ksi min., with clear acrylic coating on both sides of material.
- E. Field protection must be provided by the contractor at the job site so stacked or coiled material is not exposed to weather and moisture.
- F. Flashing may be factory fabricated or field fabricated. Unless otherwise specified, all exposed adjacent flashing shall be of the same material and finish as panel system.

Note: The rolling process of sheet metal results in inherent surface unevenness referred to as "oil-canning". This condition is also caused by several factors including thermal expansion and contraction, dark colors, both medium and high-gloss finishes and uneven substrate. "Oil-canning" in itself is not sufficient cause for material rejection.

* Not all products and colors are available in 22 gauge or aluminum substrate. Consult Berridge for product and color availability.

For complete specifications visit www.Berridge.com

Sustainable Cool Metal Roofing

THE BERRIDGE COMMITMENT

BERRIDGE METAL ROOFING IS COOL AND SUSTAINABLE

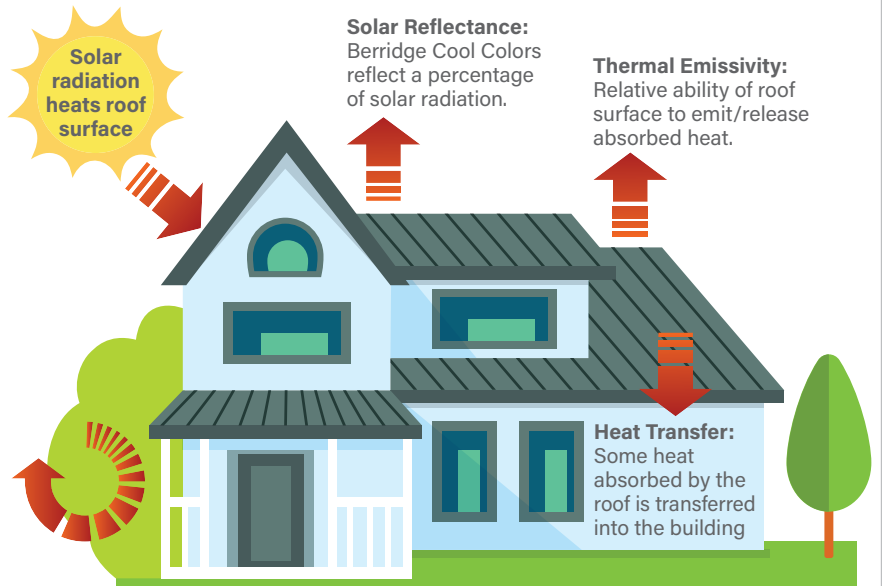
The high reflectivity, emissivity and solar reflectance index (SRI) of Berridge metal roofing helps mitigate the heat island effect. Berridge's Kynar 500® or Hylar 5000® PVDF Resin-Based Color Finishes are optimal for reducing energy consumption, particularly where cooling loads dominate. For LEED® compliance please reference the SRI values for the Berridge color finishes below.

Berridge Colors	Solar Reflectance	Emissivity	SRI
Aged Bronze	0.30	0.86	30
Almond	0.65	0.83	77
Bristol Blue	0.33	0.85	33
Buckskin	0.32	0.83	32
Burgundy	0.29	0.85	29
Charcoal Grey	0.31	0.84	30
Cityscape	0.48	0.85	54
Colonial Red	0.33	0.85	34
Copper Brown	0.30	0.85	29
Dark Bronze	0.28	0.85	27
Deep Red	0.39	0.84	41
Evergreen	0.30	0.83	29
Forest Green	0.25	0.83	22
Hartford Green	0.28	0.83	26
Hemlock Green	0.31	0.83	30
Matte Black	0.26	0.89	26
Medium Bronze	0.31	0.85	31
Parchment	0.52	0.83	58
Patina Green	0.34	0.86	36
Royal Blue	0.26	0.85	25
Shasta White	0.60	0.84	70
Sierra Tan	0.39	0.85	42
Teal Green	0.27	0.87	27
Terra-Cotta	0.32	0.83	31
Zinc Grey	0.39	0.85	42
Acrylic-Coated Galvalume®	0.67	0.20	59
Premium Colors			
Award Blue	0.17	0.83	11
Natural White	0.76	0.84	93
Metallic Colors			
Antique Copper-Cote	0.33	0.84	34
Champagne	0.40	0.85	43
Copper-Cote™	0.51	0.85	59
Lead-Cote™	0.46	0.84	50
Preweathered Galvalume®	0.40	0.85	43
Zinc-Cote™	0.52	0.83	59

SRI Values are provided by Berridge's paint supplier and may vary slightly. All values listed are initial values. Reference www.berridge.com for the most up-to-date information.

SOLAR REFLECTANCE INDEX (SRI):

Incorporates both solar reflectance and thermal emissivity in a single value. SRI measures the roof's ability to reject solar heat, defined such that a standard black (reflectance 0.05, emittance 0.90) is 0 and a standard white (reflectance 0.80, emittance 0.90) is 100.



Heat Island Effect:

Ambient temperature outside buildings is heated through convection and conduction contributing to the "urban heat island" effect which happens when metropolitan areas are significantly warmer than surrounding areas.

RECYCLED CONTENT OF BERRIDGE METAL

Berridge metal products have a high recycled content and are 100% recyclable at the end of their lifespan. Using building products that incorporate recycled materials helps reduce the impacts resulting from the extraction and processing of natural resources.

Post-consumer steel recycled content: 25.6%

Pre-consumer steel recycled content: 6.8%

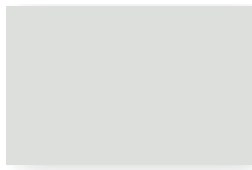
TOTAL RECYCLED CONTENT: 32.9%

LEED® COMPLIANCE

The use of Berridge Manufacturing Company metal roofing products can directly contribute up to two LEED® v4 credits for Heat Island Reduction. When a "whole building design" approach is implemented, metal roofing combined with other concerted efforts, products and building systems can contribute to other LEED® v4 credits. Reference the technical section at www.Berridge.com for more information. While every effort has been made to provide accurate information, applicants for LEED® certification should verify compliance with a LEED® expert. For more information on LEED® v4 certification visit www.usgbc.org.

BERRIDGE MANUFACTURING STANDARD COLORS

Due to limitations in the printing process, please request actual color chips for accurate color viewing.



Shasta White



Parchment



Almond



Sierra Tan



Buckskin



Medium Bronze



Aged Bronze



Copper Brown



Dark Bronze



Terra-Cotta



Deep Red



Colonial Red



Burgundy



Bristol Blue



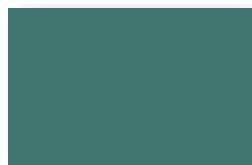
Royal Blue



Patina Green



Hemlock Green



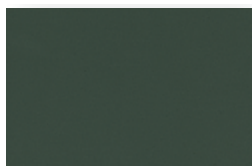
Teal Green



Forest Green



Evergreen



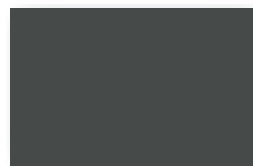
Hartford Green



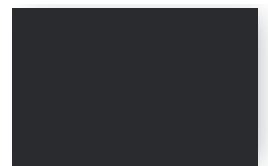
Cityscape



Zinc Grey



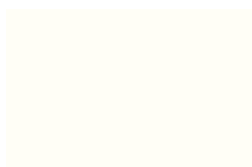
Charcoal Grey



Matte Black

Premium Colors

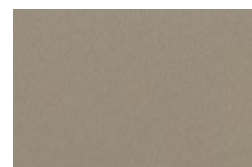
Berridge premium colors require a nominal surcharge.



Natural White



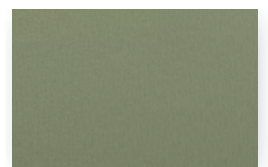
Award Blue



Champagne



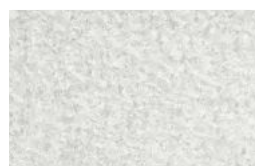
Copper-Cote™



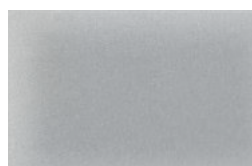
Antique
Copper-Cote

Natural Metal Finish

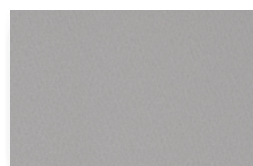
Berridge Acrylic-Coated Galvalume® is a coated sheet product that combines the corrosion resistance of Galvalume® steel sheet with a clear, organic resin applied to the top side and bottom side of Galvalume® substrate.



Acrylic-Coated
Galvalume®



Zinc-Cote™



Lead-Cote™



Prewathered
Galvalume®

Metallic Colors

Berridge metallic colors are premium finishes which require a nominal surcharge.

Please consult the BMC technical department at technical@berridge.com for LEED® compliance information.



Berridge Product Application & Index

AVAILABLE IN ALL BERRIDGE COLORS

	ROOF SYSTEM	CURVED ROOF SYSTEM	WALL SYSTEM	CURVED WALL SYSTEM	SOFFIT SYSTEM	CEILING SYSTEM	FASCIA SYSTEM	SHEATHING SYSTEM	SCREEN WALL	FENCING SYSTEM	PAGE NUMBER
STANDING SEAM SYSTEMS	Tee-Panel	■	■				■				10
	High Seam Tee-Panel	■	■				■				12
	Tee-Lock Panel	■					■*				14
	Cee-Lock Panel	■					■				15
	Zee-Lock Panel	■	■				■				16
	Double-Lock Zee-Lock Panel	■					■*				18
ALTERNATIVE SYSTEMS	Batten Seam Panel	■					■				19
	Bermuda Panel	■					■				20
SIMULATED TILE ROOF SYSTEMS	Spanish Tile	■									21
	S-Tile	■									22
SHINGLE SYSTEMS	Fish Scale Shingle		■				■				23
	Victorian & Classic Shingles	■	■				■				24
	HS-8 & HS-12 Panels		■	■	■	■		■	□		25
	HR-4 & HR-16 Panels		■			■		■	□		26
	HC-16 Panel		■	■	■	■		■	□		27
	BR-12 Panel		■			■		■	□		28
	Vee-Panel		□	■	■	■		□	□		29
	FW-1025 & FW-12 Panels		□	■	■	■		□			30
	L-Panel			■	■	■		□			31
WALL, SOFFIT, CEILING AND FASCIA PANEL SYSTEMS	B-6 Panel		□	○	■	■	■	□	□		32
	Flush Seam Panel		□	○	■	■	■	□	□		33
	Thin-Line Panel		□	○	■	■	■	□	□		34
EXPOSED FASTENER PANEL SYSTEMS	Double Rib Panel	■									35
	Deep-Deck Panel	■		■	■	■	■	■	■		36
	S-Deck Panel	■	■	■	■	■	■	■	■		37
	"M" & "R" Panel	■		■	■	■	■	■	■		38
SPECIALTY APPLICATION SYSTEMS	Fluted Fascia		■				■				39
	Curved Flat Seam Panel						■				40

Please consult product pages and the BMC technical department for further details. Panel application can vary based on installation specifications. Please consult the BMC technical department concerning additional Watertightness Warranty installation requirements.

□ Vertical application only
○ Panel does not curve but can be installed on a curved wall

* Requires flashing break from roof to fascia.

BERRIDGE TESTING AND CERTIFICATIONS SUMMARY CHART

■ - Steel only □ - Steel and Aluminum

STANDING SEAM ROOF PANELS	Wind			Fire		Impact	Wind		Wind and Water					Wind	FL PRODUCT APPROVAL	MIAMI DADE	TDI LISTED	ICC-ES Report	CEGS 07416
	UL 580	UL 90	UL 1897	UL 790	UL 263	UL 2218	ASTM E-1592	ASTM E-330	ASTM E-2140	ASTM E-1646	ASTM E-1680	ASTM E-331	ASTM E-283	FM 4471					
Tee-Panel		□		□	■	□				□	□	□	□		■				
High Seam Tee-Panel*		■		■	■	■				□	□	□	□		■				
Tee-Lock Panel	□	□	□	□		□	■			□	□	□	□	■	□		□		
Cee-Lock Panel**	□	□	□	□	■	□	■			■	■	■	■		□	■	□	■	
Zee-Lock Panel (Single Lock)**	■	■	■	□	■	□	■		■	■	■	■	■		■		■	■	■
Double-Lock Zee-Lock Panel**	□	■	□	□	■	□	■		■	■	■	■	■	■	□	□	□	■	■
OTHER ROOF SYSTEMS	UL 580	UL 90	UL 1897	UL 790	UL 263	UL 2218	ASTM E-1592	ASTM E-330	ASTM E-2140	ASTM E-1646	ASTM E-1680	ASTM E-331	ASTM E-283	FM 4471	FL PRODUCT APPROVAL	MIAMI DADE	TDI LISTED	ICC-ES Report	CEGS 07416
Bermuda Panel		■		■		■									■				
Spanish Tile	■		■	■		■									■		■		
S-Tile	■		■	■		■	■								■	■	■		
Batten Seam Panel		■		■	■	■									■†				
Victorian & Classic Shingles	■		■												■	■	■		
Fish Scale Shingle																			
Curved Flat Seam Panel																			
"M" & "R" Panel		■		■		■									■				
Deep-Deck Panel		■		■		■	□			□	□				□		□		
S-Deck Panel				■		■	□								□		□		
Double-Rib Panel		■		■		■									■				
FASCIA, WALL & SOFFIT PANELS	UL 580	UL 90	UL 1897	UL 790	UL 263	UL 2218	ASTM E-1592	ASTM E-330	ASTM E-2140	ASTM E-1646	ASTM E-1680	ASTM E-331	ASTM E-283	FM 4471	FL PRODUCT APPROVAL	MIAMI DADE	TDI LISTED	ICC-ES Report	CEGS 07416
HS-8 & HS-12 Panels***							□					□	□		□		□		
HR-4*** & HR-16 Panels							□					□	□		□ †	■ †	□ †		
HC-16 Panel***							□					□	□		□		□		
BR-12 Panel***							□					□	□		□				
Vee-Panel																			
FW-1025 & FW-12 Panels							□					□	□		□	■	□		
L-Panel							■								■	■	■		
B-6 Panel								■											
Flush Seam Panel								■					■		■				
Thin-Line Panel								■							■				
Fluted Fascia								■							■				

For actual test results, technical questions, fastener types, fastener spacing or job-specific engineering, please contact the Berridge Technical Department at (800) 669-0009 or technical@berridge.com. Updates and additional testing are added on a continual basis. Consult the Berridge Technical Department for the latest updates.

* 1" tall seam is UL-90 wind uplift approved for both steel and aluminum. 1 1/2" tall seam is UL-90 wind uplift approved for steel only;

** Use continuous ribs for ASTM E-1646, ASTM E-1680, ASTM E-331, and ASTM E-283 compliance;

*** See HR-16 Panel for test results on ASTM E-331 and ASTM E-283 with similar panel seams;

† Approved only with Zee-Lock (Single Lock) assembly;

‡ HR-16 only approved.

UL 90 - Uplift test of roof system.
 UL 1897 - Uplift test of roof system.
 UL 790 - Fire test of roof system.
 UL 263 - Fire test of construction and materials.
 UL 2218 - Impact resistance of prepared roof covering materials.
 ASTM E-1592 - Structural performance of sheet metal roof and siding systems by uniform static air pressure difference.
 ASTM E-330 - Structural performance of exterior windows, doors, skylights, and curtain walls by uniform static air pressure difference.

ASTM E-2140 - Water penetration of metal roof panel systems by static water pressure head.
 ASTM E-1646 - Water penetration of exterior metal roof panel systems by uniform static air pressure difference.
 ASTM E-1680 - Rate of air leakage through exterior metal roof panel systems.
 ASTM E-331 - Water penetration of exterior windows, skylights, doors, and curtain walls by uniform static air pressure difference.
 ASTM E-283 - Rate of air leakage through exterior windows, curtain walls, and doors under specified pressure differences across the specimen.

FM 4471 - This standard states approval requirements for Class 1 panel roofs. A Class 1 panel roof meets the criteria of this standard for fire, wind, foot traffic, and hail damage resistance.
 Florida Product Approval - Standard of practice for product evaluations and consistency of enforcement for the state of Florida.
 Miami-Dade Approval - Established with its main goal to allow new and innovated ideas to be developed into useful, practical, lasting, and safe products for use in high velocity hurricane zones.

Berridge Tee-Panel

STANDING SEAM SYSTEM



The Berridge Tee-Panel is an architectural metal standing seam panel that offers a patented vinyl weatherseal as an integral part of the snap-on seam.



Materials

24 Gauge Steel

Limited Availability: 22 Gauge Steel, 0.032 Aluminum

Specifications

Uses: Roof, Fascia**

Coverage: 12 3/4"

Finishes: Smooth

Fasteners: Concealed

Applications: Solid sheathing

Seam: 1" snap-on with extruded vinyl weatherseal

UL Classification

- UL-90 wind resistance rated*
- Fire resistance rated
 - UL-790*
 - UL-263
- UL-2218 impact resistance rated*

ASTM Tests

- Wind and water tested
 - ASTM E-1646*
 - ASTM E-1680*
 - ASTM E-331*
 - ASTM E-283*

Florida Product approved



Installation - Standard

- Panel is available from the factory in continuous lengths up to a maximum of 40'.
- May be site formed in continuous lengths with the Berridge SS-14 Roll Former.
- Extruded vinyl weatherseal is an integral part of snap-on seam cap and prevents siphoning or flooding over seam.
- Entire roof area shall be covered with a minimum of one layer of approved underlayment.

Note: Unless otherwise noted, all testing is for steel only.

* Approved for steel and aluminum.

** Fascia cannot be curved or tapered.

Pictured Above

Project: South Patrol - KCPD

Architect: Hoefer Wysocki Architects, LLC

General Contractor: Titan Built, LLC

Installing Contractor: Shawhan Sheet Metal, LLC

Color: Custom Bronze

TEE-PANEL - CURVED AND/OR TAPERED

The Berridge Tee-Panel includes the patented vinyl weatherseal as well as the ability to be curved and/or tapered on-site allowing for a custom installation.



Installation - Curved and/or Tapered Tee-Panel (Roofing applications only)

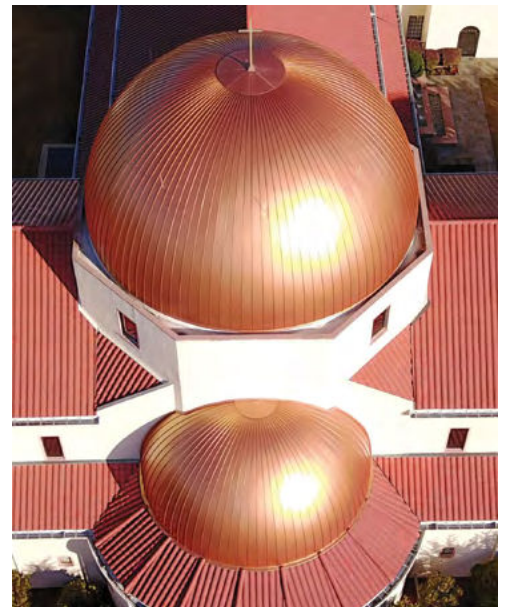
- Tee-Panels and snap-on seams can be curved in continuous lengths on site using the Berridge SS-14 Roll Former.
 - Convex at a minimum of 4'
 - Concave at a minimum of 6'
- Straight Tapered Tee-Panels can be formed on-site with the Berridge SL-24 Roll Former and cannot be curved.
- Compound Curved Tee-Panels are formed on-site with the Berridge SL-1 Roll Former. The SL-1 does not curve panels. Panels must be hand curved over solid decking. Snap-on seams are curved using the SS-14 Roll Former or the SC (Seam Curver) Roll Former.

Pictured Below

Project: McKenna Health Link & Children's Museum
Architect: RVK Architects
General Contractor: The Koehler Company
Color: Zinc Grey

Pictured Right

Project: Saint Ann's Catholic Parish
Installing Contractor: D.R. Kidd Company, Inc.
Color: Copper-Cote™

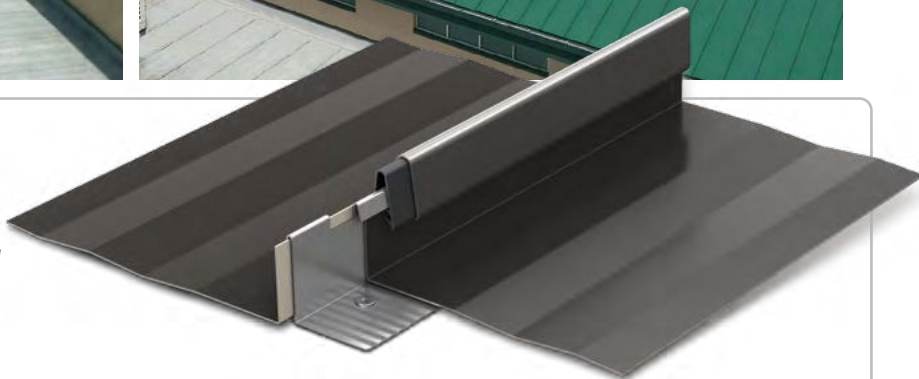


Berridge High Seam Tee-Panel

STANDING SEAM SYSTEM



The Berridge High Seam Tee-Panel offers a taller seam option, wider coverage, and a striated finish along with the patented vinyl weatherseal as part of the snap-on seam.



Materials

24 and 22 Gauge Steel
0.032 Aluminum

Specifications

Uses: Roof, Fascia**

Coverage: 18 1/4"

Finishes: Striated, optional smooth

Fasteners: Concealed

Applications: Solid sheathing

Seam: 1" or 1 1/2" snap-on with extruded vinyl weatherseal

UL Classification

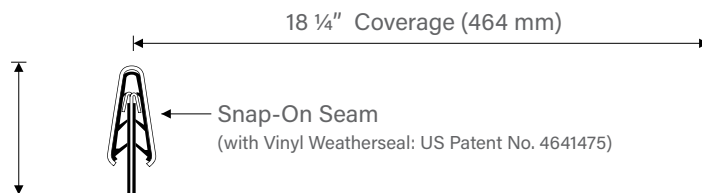
- UL-90 wind resistance rated
 - 1" tall seam approved for steel and aluminum
 - 1 1/2" tall seam approved for steel only
- Fire resistance rated
 - UL-790
 - UL-263
- UL-2218 impact resistance rated

ASTM Tests

- Wind and water tested
 - ASTM E-1646* ASTM E-331*
 - ASTM E-1680* ASTM E-283*

Florida Product approved

1" (25 mm)
or
1 1/2" (38 mm)



Installation - Standard

- Panel is available from the factory in continuous lengths up to a maximum of 40'
- May be site formed in continuous lengths with the Berridge SS-1421 Roll Former
- Extruded vinyl weatherseal is an integral part of snap-on seam cap and prevents siphoning or flooding over seam
- Entire roof area shall be covered with a minimum of one layer of approved underlayment

Note: Unless otherwise noted, all testing is for steel only.

* Approved for steel and aluminum.

** Fascia cannot be curved or tapered.

Pictured Above

Project: City of Warrensburg Community Center

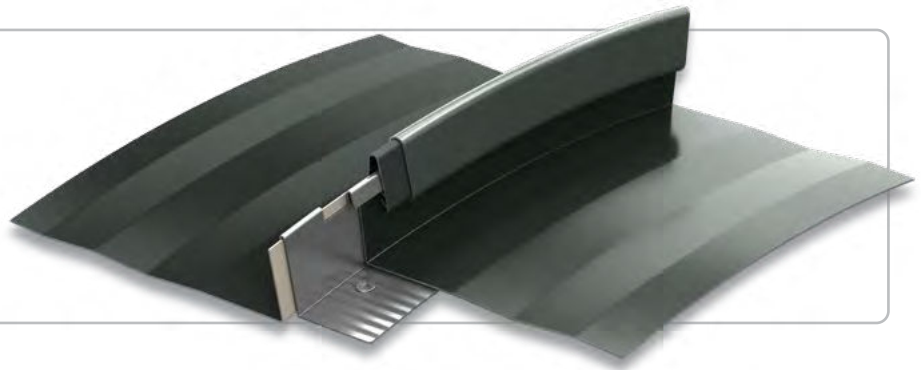
Architect: Great River Associates

General Contractor and Installer: DB2 Services, Inc.

Color: Forest Green

HIGH SEAM TEE-PANEL - CURVED OR TAPERED

The Berridge High Seam Tee-Panel can be curved or tapered making it a popular choice for a wide range of projects.



Installation - Curved or Tapered High Seam Tee-Panel (roofing applications only)

- High Seam Tee-Panels, straight and curved, are formed on-site using the Berridge SS-1421 Roll Former. Snap-on seams are also curved with the SS-1421 Roll Former.
 - 1" Seam: Convex at a minimum of 5'
Concave at a minimum of 8'
 - 1 ½" Seam: Convex at a minimum of 8'
Concave is not available
- Tapered High Seam Tee-Panels can be formed on-site with the Berridge SL-24 Roll Former and cannot be curved.
- High Seam Tee-Panels cannot be compound curved.

Pictured Right

Project: ISHA - The Abode of Yoga
Architect: Collective Design Solutions, LLC
General Contractor: TRC Construction Services, Inc.
Installing Contractor: Village Roofing Co., Inc.
Color: Copper-Cote™



Pictured Below

Project: Warm Springs Specialty Hospital
Architect: Heitkamp Swift Architect
General Contractor: Vaughn Construction
Installing Contractor: Pioneer Roof Systems
Color: Forest Green

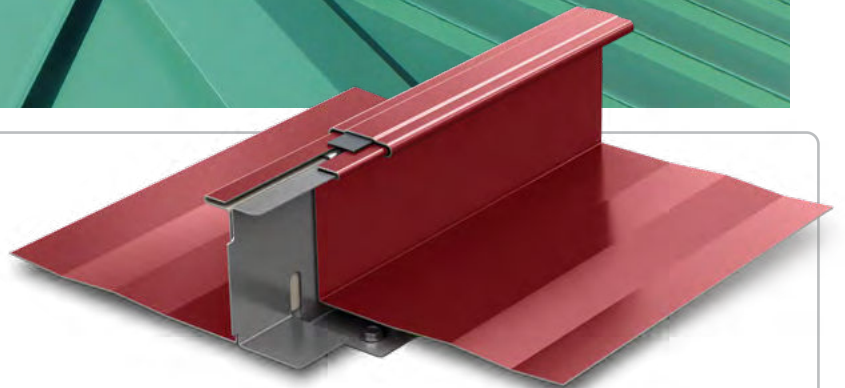


Berridge Tee-Lock Panel

STANDING SEAM SYSTEM



The Berridge Tee-Lock Panel is a symmetrical architectural and structural standing seam panel. The Tee-Lock panel has a highly visible profile and offers enhanced performance in both solid deck and open framing applications.



Materials

24 and 22 Gauge Steel
0.032 and 0.040 Aluminum

Specifications

Uses: Roofing, Fascia**
Coverage: 18"
Finishes: Striated, optional smooth
Fasteners: Concealed
Applications: Open framing, solid sheathing
Seam: 2 3/8" standing mechanically seamed sidelap
Optional: Extruded vinyl weatherseal

UL Classification

- UL-90* Wind resistance rated
- Wind resistance tested
 - UL-580* ▪ UL-1897*
- UL-790 fire resistance rated*
- UL-2218 impact resistance rated*

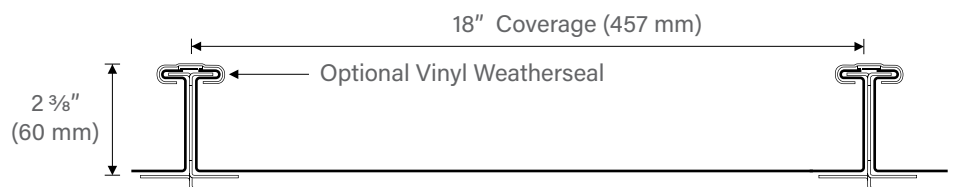
ASTM Tests

- ASTM E-1592 wind resistance tested
- Wind and water resistance tested
 - ASTM E-1646* ▪ ASTM E-331*
 - ASTM E-1680* ▪ ASTM E-283*

FM 4471 approved & 1-240 SH wind rated***

Florida Product approved*

Texas Department of Insurance listed*



Installation

- Panel is available from the factory in continuous lengths up to a maximum of 40'.
- May be site formed in continuous lengths with the Berridge TP-24 Roll Former.
- Panel is mechanically seamed in the field using the Tee-Lock Panel Seamer.

Note: Unless otherwise noted, all testing is for steel only.

* Approved for steel and aluminum.

** Requires flashing break from roof to fascia.

*** For open framing applications with continuous rib only.

Pictured Above

Project: Orlando Lift Station #3

Architect: Hazen and Sawyer

General Contractor: Wharton-Smith, Inc.

Installing Contractor: Architectural Sheet Metal, Inc.

Color: Forest Green

Berridge Cee-Lock Panel

STANDING SEAM SYSTEM



The Berridge Cee-Lock Panel is an architectural metal standing seam panel that incorporates an integral snap-lock seam and an optional patented vinyl weatherseal.



Materials

24 and 22 Gauge Steel
0.032 Aluminum

Specifications

Uses: Roof, Fascia
Coverage: 16 1/2" or 11 1/2"***
Finishes: Smooth, optional striations
Fasteners: Concealed
Applications: Solid sheathing
Seam: 1 1/2" snap-lock seam
Optional: Extruded vinyl weatherseal

UL Classification

- UL-90* Wind resistance rated
- UL-790* Fire resistance rated
- Wind resistance tested
- UL-580*
- UL-1897*
- UL-263
- UL-2218 impact resistance rated*

ASTM Tests

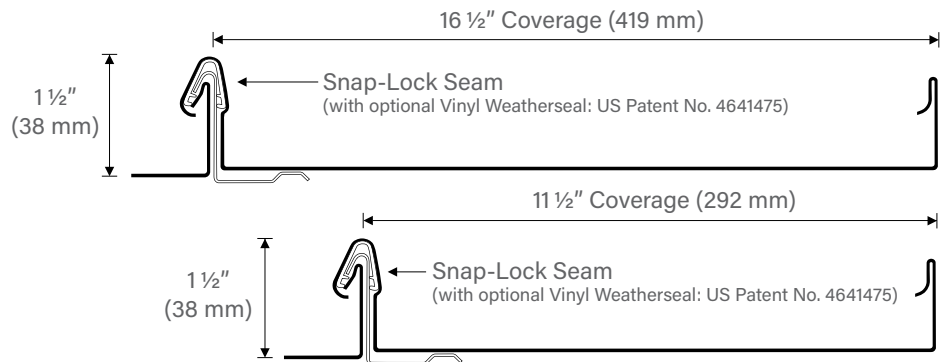
- ASTM E-1592 wind resistance tested
- ASTM E-1646
- ASTM E-1680
- ASTM E-331
- ASTM E-283

Florida Product approved*

Miami-Dade approved

Texas Department of Insurance listed*

ICC-ES Report ESR-3486



Installation

- Panel is available from the factory in continuous lengths up to a maximum of 40'.
- 16 1/2" profile may be site formed in continuous lengths with the Berridge CL-21 Roll Former.

Note: Unless otherwise noted, all testing is for steel only.

* Approved for steel and aluminum.

** Contact BMC for material availability. Not available with striations.

Pictured Above

Project: Longwood, FL Residence

Installing Contractor: Architectural Sheet Metal, Inc.

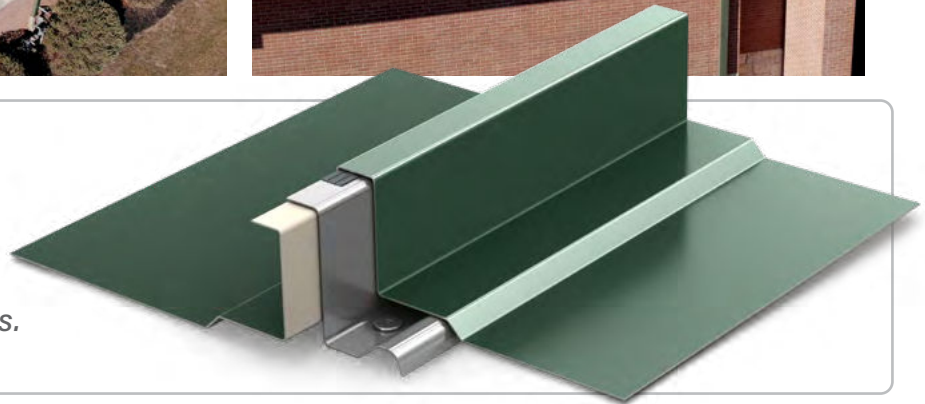
Color: Matte Black

Berridge Zee-Lock Panel

STANDING SEAM SYSTEM



The Berridge Zee-Lock Panel provides architectural appeal with an optional patented vinyl weatherseal making it an optimal choice for a variety of applications.



Materials

24 and 22 Gauge Steel
0.032 and 0.040 Aluminum***

Specifications

Uses: Roof, Fascia**
Coverage: 16"

Finishes: Smooth, optional striations
Fasteners: Concealed

Applications: Open framing, solid sheathing
Seam: 2" standing mechanically seamed sidelap
Optional: Snap-on batten cap, extruded vinyl weatherseal on continuous rib

UL Classification

- UL-90 Wind resistance rated
- Wind resistance tested
 - UL-580
 - UL-1897
- Fire resistance rated
 - UL-790*
 - UL-263
 - UL-2218 impact resistance rated*

ASTM Tests

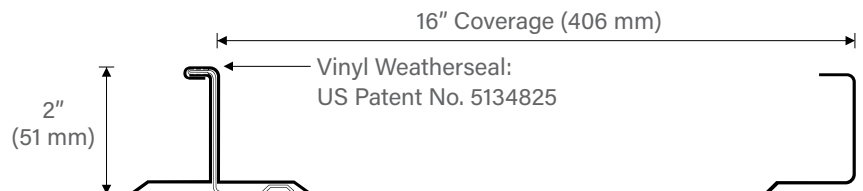
- ASTM E-1592 wind resistance tested
- Wind and water resistance tested
 - ASTM E-2140
 - ASTM E-1646
 - ASTM E-1680
 - ASTM E-331
 - ASTM E-283

Florida Product approved

ICC-ES Report ESR-3486

Corps of Engineers CEGS 07416 approved

Texas Department of Insurance listed



Installation - Standard

- Panel is available from the factory in continuous lengths up to a maximum of 40'.
- May be site formed in continuous lengths with the Berridge SP-21 Roll Former.
- Panel is mechanically seamed in the field using the Berridge Zee-Lock Seamer in a single pass.
- Optional extruded vinyl weatherseal is required for open framing.

Note: Unless otherwise noted, all testing is for steel only.

* Approved for steel and aluminum.

** Fascia cannot be curved or tapered.

*** Aluminum cannot be curved or tapered.

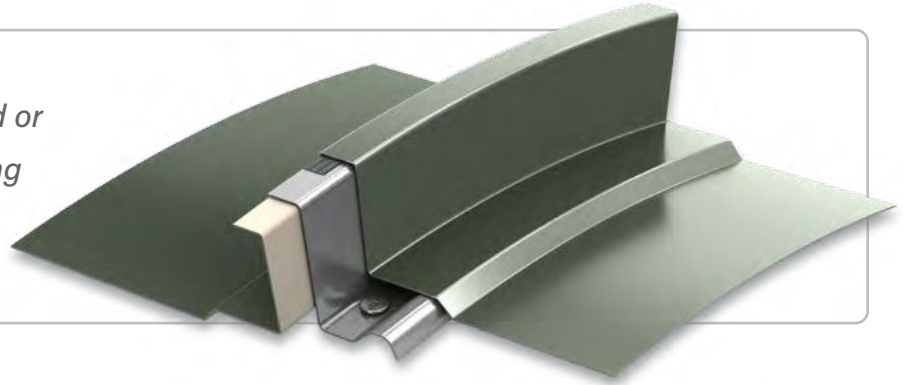
Pictured Above

Project: San Marcos Central Fire Station
Architect: Brinkley Sargent Wiginton Architects
General Contractor: Stores Construction
Installing Contractor: Bravo Roofing
Color: Antique Copper-Cote



ZEE- LOCK PANEL - CURVED OR TAPERED

The Berridge Zee-Lock Panel can be curved or tapered over solid sheathing or open framing making for limitless design possibilities.



Installation - Curved or Tapered (Roofing applications only)

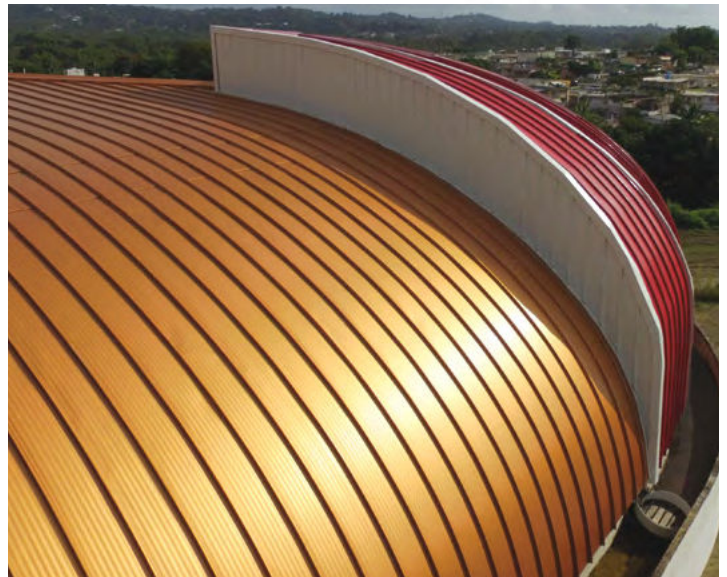
- Zee-Lock panels and Continuous Zee-Rib can be curved on-site using the Berridge ZC-21 Zee-Lock Curving Machine. This can be used in tandem with the SP-21 Roll Former or as a stand alone unit.
 - Convex at a minimum of 20'
- Tapered Zee-Lock panels can be formed on-site using the Berridge TZ-21 Roll Former.
- Extruded vinyl weatherseal is required for curved applications
- Consult BMC concerning load capacity details.

Pictured Below

Project: Palm Harbor High School
Architect: Hoffman Architects
Installing Contractor: Quality Roofing, Inc.
Color: Burgundy

Pictured Right

Project: San Lorenzo Coliseum
Architect: Architectural and Engineering Design Group, PSC
General Contractor: Alonso & Carus
Installing Contractor: Iron Work, Inc.
Color: Copper-Cote™



Berridge Double-Lock Zee-Lock Panel

STANDING SEAM SYSTEM



The Berridge Double-Lock Zee-Lock Panel is a structural metal standing seam panel with a 2" high seam that is 180-degree mechanically seamed, making it an ideal roofing choice for any project.



Materials

24 Gauge Steel
0.032 and 0.040 Aluminum

Specifications

Uses: Roof, Fascia**

Coverage: 16"

Finishes: Smooth, optional striations

Fasteners: Concealed

Applications: Open framing, solid sheathing

Seam: 2" 180° standing mechanically seamed sidelap

UL Classification

- UL-90 Wind resistance rated
- Wind resistance tested
 - UL-580*
 - UL-1897*
- Fire resistance rated
 - UL-790*
 - UL-263
 - UL-2218 impact resistance rated*

ASTM Tests

- ASTM E-1592 wind resistance tested
- Wind and water resistance tested
 - ASTM E-2140
 - ASTM E-1646
 - ASTM E-1680
 - ASTM E-331
 - ASTM E-283

FM 4471 approved & 1-150 SH wind rated***

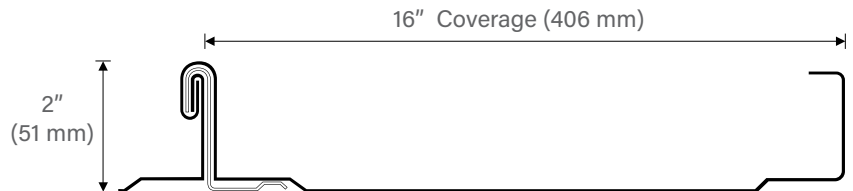
Florida Product approved*

Miami-Dade approved*

Texas Department of Insurance listed*

ICC-ES Report ESR-3486

Corps of Engineers CEGS 07416 approved



Installation

- Panel is available from the factory in continuous lengths up to a maximum of 40'.
- May be site formed in continuous lengths with the Berridge SP-21 Roll Former.
- Panel is mechanically seamed in the field using the Berridge Double-Lock Zee-Lock Seamer in a single pass. The double-lock seam is not available with vinyl weatherseal.
- Consult BMC for curving availability.

Note: Unless otherwise noted, all testing is for steel only.

* Approved for steel and aluminum.

** Requires flashing break from roof to fascia.

*** For metal decking applications only.

Pictured Above

Project: Gaylord Rockies Hotel and Convention Center

Architect: HKS, Inc.

General Contractor: Mortenson/Welbo JV

Installing Contractor: Flynn BEC, LP

Color: Pre-Weathered Galvalume®

Berridge Batten Seam Panel

ALTERNATIVE SYSTEM



The Berridge Batten Seam Panel is a two-part system utilizing the Deep-Vee Panel and square snap-on battens for bold panel lines.



Materials

24 Gauge Steel

Specifications

Uses: Roof, Fascia

Coverage: 16"

Finishes: Smooth

Fasteners: Concealed

Applications: Open framing, solid sheathing

Batten Profile: 2" wide and 1 3/4" high snap-on batten cap

UL Classification

- UL-90 wind resistance rated
- Fire resistance rated
 - UL-790
 - UL-263
- UL-2218 impact resistance rated

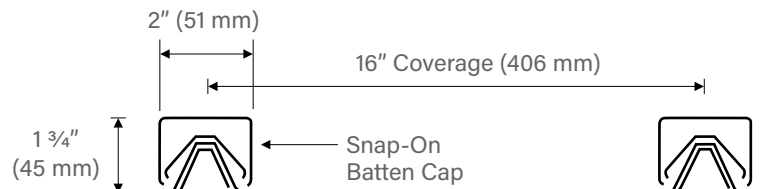
Florida Product approved (Approved only with Zee-Lock assembly)

Pictured Above

Project: Cooks Hospital
Architect: RTKL Associates, Inc.
General Contractor: Linebeck Group, LLS
Installing Contractor: Jeff Eubank Roofing Co.
Color: Custom Rich Blue

Pictured Right

Project: Southwest Coil
Architect: PSRBB Industrial Group, Inc.
General Contractor: Garland Loman
Installing Contractor: H.R.T. Roofing & Construction
Color: Patina Green



Installation

- Panel and cap are available from the factory in continuous lengths up to a maximum of 40'.
- May be site formed in continuous lengths with the Berridge BP-21 Roll Former.



Berridge Bermuda Panel

ALTERNATIVE SYSTEM



The Berridge Bermuda Panel has the traditional Bermuda look with the strength of steel. The strong horizontal lines create a smooth, stepped appearance and provide a great way to achieve a classic look.



Materials

24 Gauge Steel

Specifications

Uses: Roof, Fascia, Mansard

Coverage: 11"

Finishes: Smooth, optional wood grain texture

Fasteners: Concealed

Applications: Solid sheathing

Panel Height: 1" seam

Optional: Vinyl weatherseal

UL Classification

- UL-90 wind resistance rated
- UL-790 fire resistance rated
- UL-2218 impact resistance rated

Florida Product approved

Pictured Above and Right

Project: San Clemente Office Park

Architect: Boka Powell

General Contractor: Zapalac/Reed

Installing Contractor: Texas Fifth Wall

Color: Champagne



Installation

- Panel is available from the factory in continuous lengths up to a maximum of 40'.
- May be site formed in continuous lengths with the Berridge BP-14 Roll Former.



Berridge Spanish Tile

SIMULATED TILE SYSTEM



The Berridge Spanish Tile is a durable way to achieve a classic tile appearance. This panel is significantly lighter and more durable than the clay alternative due to the use of high strength steel.



Materials

24 Gauge Steel

Specifications

Uses: Roof

Coverage: 8" wide x 16" long

Finishes: Smooth

Fasteners: Concealed

Applications: Open framing, solid sheathing

Tiles: 8" wide and 2" tall

Optional: Custom mixed color palette

UL Classification

- Wind resistance tested
 - UL-580
 - UL-1897
- UL-790 fire resistance rated
- UL-2218 impact resistance rated

Florida Product approved

Texas Department of Insurance listed

Pictured Above

Project: ASU Richardson Hall

Architect: OZ Architecture

General Contractor: G. H. Phipps Construction

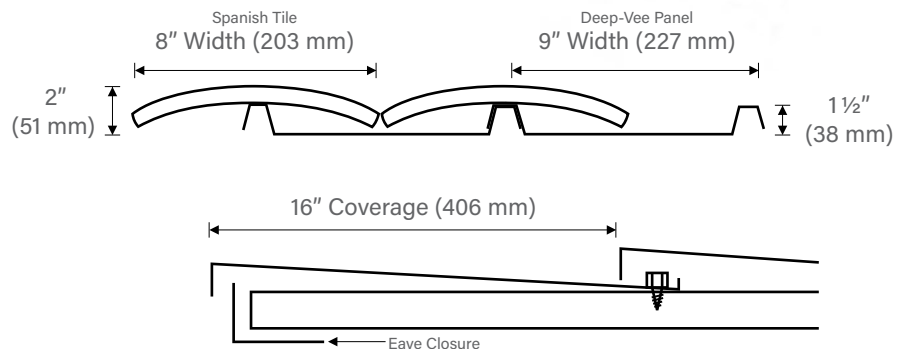
Installing Contractor: Central States Roofing Company, Inc.

Color: Terra-Cotta

US Green Building Council LEED® Silver Award Winner

Pictured Right

Color: Custom mixed palette



Installation

- Individual factory formed tiles are installed on top of Deep-Vee factory formed panels up to a maximum of 40'.
- Deep-Vee panels may be site formed in continuous lengths with the Berridge SP-14 Roll Former.

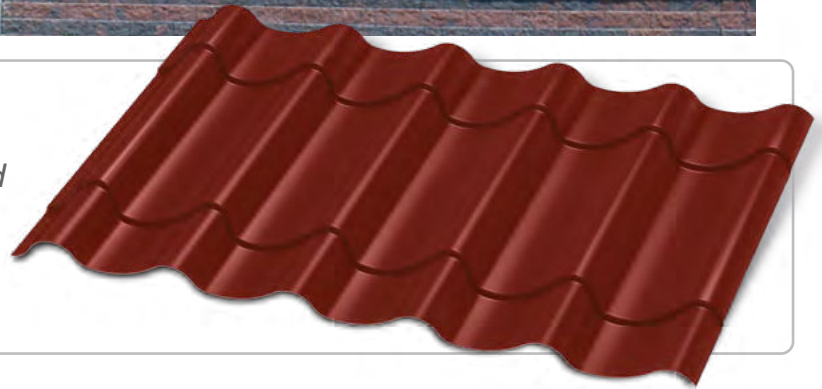


Berridge S-Tile

SIMULATED TILE SYSTEM



The Berridge S-Tile system provides a stylish and lightweight roof system. This economical exposed fastener panel offers a simulated tile appearance with all the protection and performance of metal.



Materials

24 Gauge Steel

Specifications

Uses: Roof

Coverage: 32¹/₁₆"

Finishes: Smooth

Fasteners: Exposed

Applications: Solid sheathing

Tiles: 14" step lengths and 1¹/₂" tall

UL Classification

- Wind resistance tested
 - UL-580
 - UL-1897
- UL-790 fire resistance rated
- UL-2218 impact resistance rated

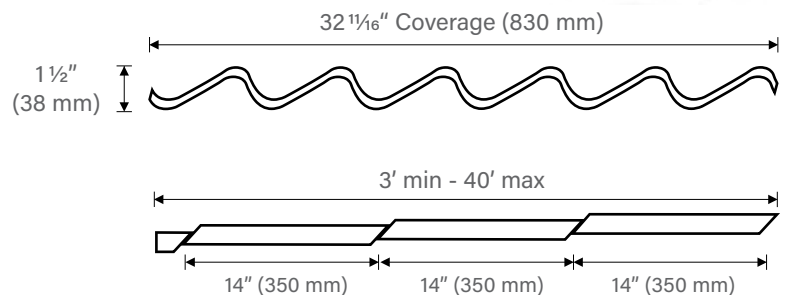
ASTM Tests

- ASTM E-1592 wind resistance tested

Florida Product approved

Miami-Dade approved

Texas Department of Insurance listed



Installation

- Panel is available from the factory in continuous lengths up to a maximum of 40'.

Pictured Above

Project: Roosevelt Zoo Park
Architect: Anderson, Wade & Whitty
General Contractor: Rolac Contracting
Installing Contractor: Johnson Roofing
Color: Terra-Cotta
Image: Courtesy of S. Martens;
Buildings of North Dakota, 2015,
University of Virginia Press



Berridge Fish Scale Shingle

SHINGLE SYSTEM



The Berridge Fish Scale Shingle creates a historical look while providing a more durable, lifelong option.



Materials

24 Gauge Steel

Specifications

Uses: Walls, Steep Mansards, Fascia (80°+)

Finishes: Lightly textured and scalloped

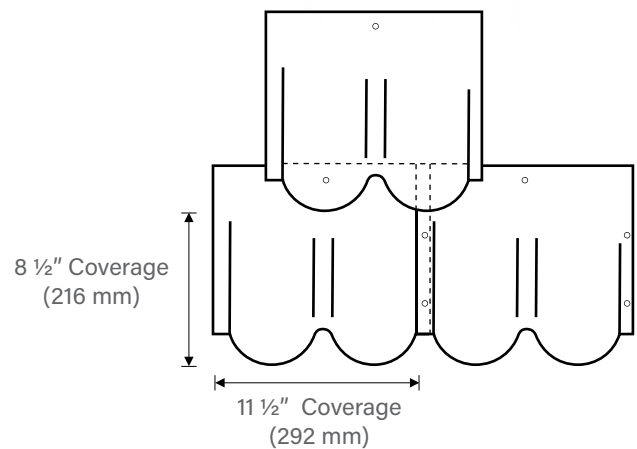
Fasteners: Concealed

Applications: Solid sheathing

Coverage: 11 ½" wide and 8 ½" tall

Installation

- Factory formed prefinished tiles



Pictured Above

Project: Krehbiel Scholarship Hall

Architect: TreanorHL Architects

General Contractor: B. A. Green Construction, Inc.

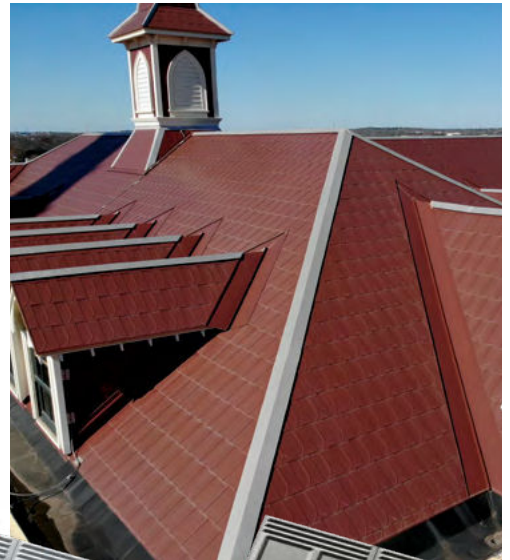
Installing Contractor: Diamond Everley Roofing

Color: Parchment

Image: Photo courtesy of TreanorHL Architects, photography taken by Architectural Photographics

Berridge Victorian & Classic Shingles

SHINGLE SYSTEM



The Berridge Victorian and Classic Shingles are ideal for restoration projects or new construction requiring a historic Victorian or traditional feel without compromising the integrity of the roof or walls.



Materials

24 Gauge Steel

Specifications

Uses: Roof, Wall, Fascia

Finishes: Victorian or Classic embossed pattern

Fasteners: Concealed

Applications: Solid sheathing

Coverage: 9" wide and 12" tall

UL Classification

- Wind resistance tested
 - UL-580
 - UL-1897

Florida Product approved

Miami-Dade approved

Texas Department of Insurance listed

Installation

- Factory formed prefinished tiles.

Pictured Above

Panel: Victorian Shingle

Project: Our Lady of the Lake University

Architect: Munoz and Company

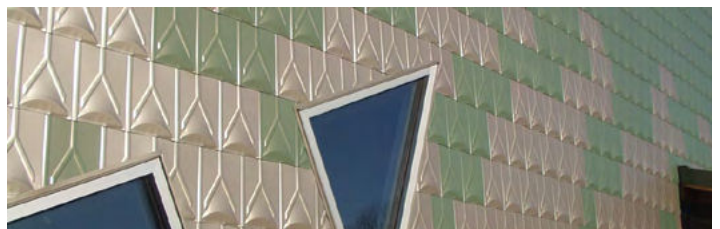
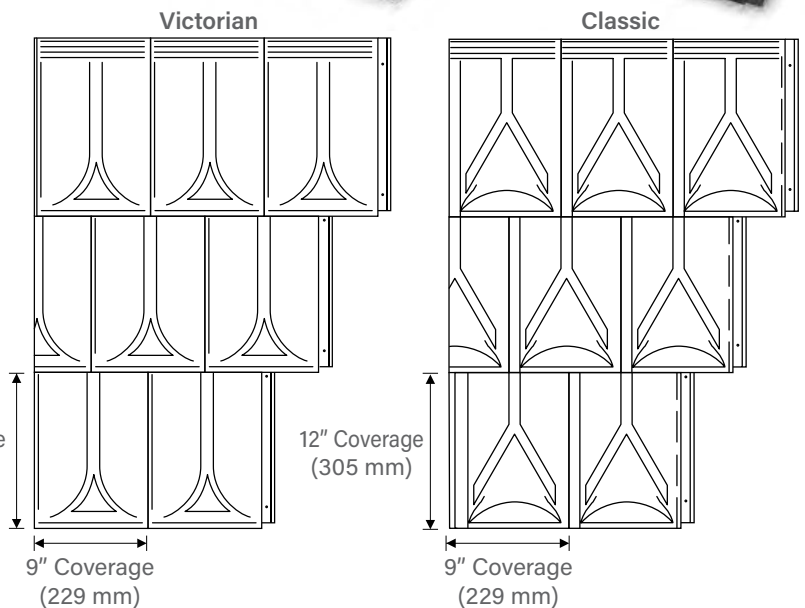
General Contractor: Bartlett Cocke LP

Installing Contractor: Brester Construction

Color: Colonial Red

Pictured Right

Panel: Classic Shingle



Berridge HS-8 & HS-12 Panels

WALL, SOFFIT, CEILING, AND FASCIA PANEL SYSTEM



The Berridge HS-8 and HS-12 metal wall panels are designed for horizontal and vertical wall applications and interlock with each other and with the Berridge HC-16, BR-12, HR-4, and HR-16 wall panels to provide endless design opportunities.



Standard Stucco Embossed

Materials

24 and 22 Gauge Steel
0.032 Aluminum

Specifications

Uses: Wall, Soffit, Ceiling, Fascia, Screen Wall, Berridge Fencing System

Coverage: HS-8: 8"; HS-12: 12"

Finishes: Standard stucco embossed, optional smooth**

Fasteners: Concealed

Applications: Vertical on Fencing (see page 41); horizontal or vertical over open framing or solid sheathing

Pattern: HS-8: $\frac{7}{8}$ " height and $5 \frac{5}{8}$ " rib with 2" reveal

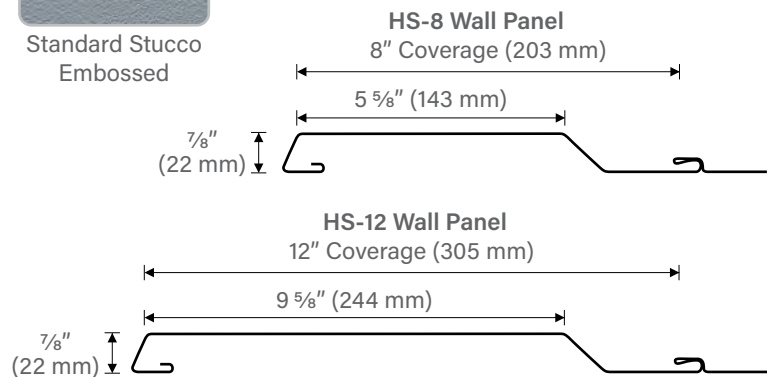
HS-12: $\frac{7}{8}$ " height and $9 \frac{5}{8}$ " rib with 2" reveal

ASTM Tests

- ASTM E-1592 wind resistance tested*
- Wind and water resistance tested (see page 9 for details)
 - ASTM E-331*
 - ASTM E-283*

Florida Product approved*

Texas Department of Insurance listed*



Installation

- Panel is available from the factory in continuous lengths up to a maximum of 30' for embossed panels.
- Interlocks with each other, HC-16, BR-12, HR-4, and HR-16 panels.

Note: Unless otherwise noted, all testing is for steel only.

* Approved for steel and aluminum.

** Contact BMC for limited material availability.

Smooth finish is not available for all applications.

Pictured Above

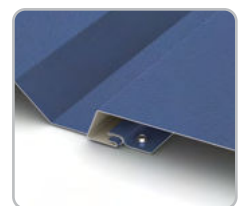
Project: Salude Transitional Care Facility

Architect: Wright Group Architects + Planners, P.L.L.C.

General Contractor: Integra Construction

Installing Contractor: Bristol Engineered Metals, LLC

Color: Buckskin, Preweathered Galvalume®



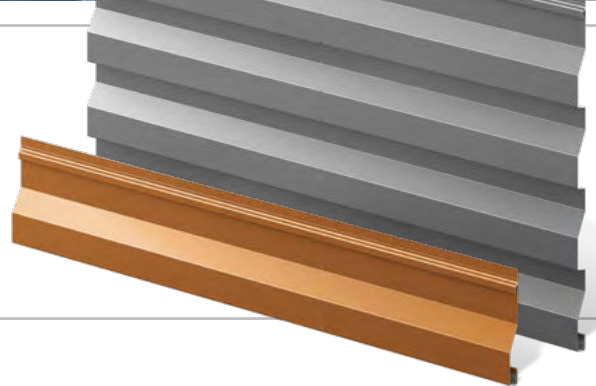
Detail of HS Panel Interlock

Berridge HR-4 & HR-16 Panels

WALL AND FASCIA PANEL SYSTEM



The Berridge HR-4 Accent Wall Panel and the HR-16 Metal Wall panels are versatile and maintenance-free panels that can be installed horizontally or vertically. Both panels interlock with the HC-16, BR-12, HS-8, and HS-12 panel profiles.



Materials

24 and 22 Gauge Steel
0.032 Aluminum

Specifications

Uses: Wall, Fascia, Screen Wall, Berridge Fencing System

Coverage: HR-4: 4"; HR-16: 16"

Finishes: Smooth

Fasteners: Concealed

Applications: Vertical on fencing (see page 41); horizontal or vertical over open framing or solid sheathing

Pattern: 7/8" height and 4" rib with 2" reveal

ASTM Tests

- ASTM E-1592 wind resistance tested*
- Wind and water resistance tested
 - ASTM E-331*
 - ASTM E-283*

Florida Product approved*†

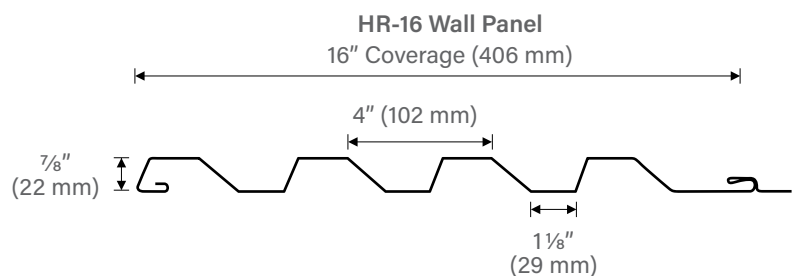
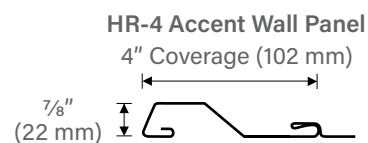
Miami-Dade approved †

Texas Department of Insurance listed* †

Note: Unless otherwise noted, all testing is for steel only.

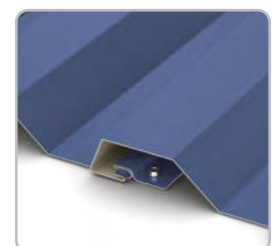
* Approved for steel and aluminum.

† HR-16 only approved.



Installation

- Panel is available from the factory in continuous lengths up to a maximum of 40'.
- Interlocks with each other, HC-16, BR-12, HS-8, and HS-12 panels.



Detail of HR-16 Panel Interlock

Pictured Above

Project: Strawberry Crest High School
Installing Contractor: Ramcon
Color: Zinc-Cote™

Berridge HC-16 Panel

WALL, SOFFIT, CEILING, AND FASCIA PANEL SYSTEM



The Berridge HC-16 Panel is a concealed fastener 7/8" deep corrugated metal wall panel which can be installed horizontally or vertically and can interlock with Berridge's BR-12, HR-4, HR-16, HS-8, and HS-12 panel profiles for maximum design flexibility.



Materials

24 and 22 Gauge Steel
0.032 and 0.040 Aluminum

Specifications

Uses: Wall, Soffit, Ceiling, Fascia, Screen Wall, Berridge Fencing System

Coverage: 16"

Finishes: Smooth

Fasteners: Concealed

Applications: Vertical on fencing (see page 41); horizontal or vertical over open framing or solid sheathing

ASTM Tests

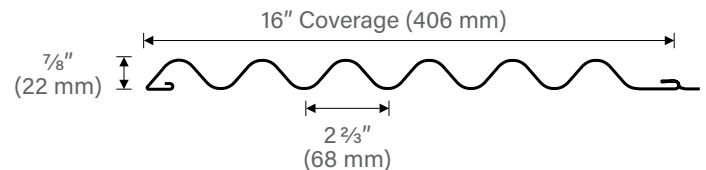
- ASTM E-1592 wind resistance tested*
- Wind and water resistance tested (see page 9 for details)
 - ASTM E-331*
 - ASTM E-283*

Florida Product approved*

Texas Department of Insurance listed*

Note: Unless otherwise noted, all testing is for steel only.

* Approved for steel and aluminum.



Installation

- Panel is available from the factory in continuous lengths up to a maximum of 40'.
- Interlocks with BR-12, HR-4, HR-16, HS-8, and HS-12 panels.

Pictured Above

Project: Russel Park Office

General Contractor: Russel Co.

Installing Contractor: T Spark Enterprises, LLC

Color: Charcoal Grey



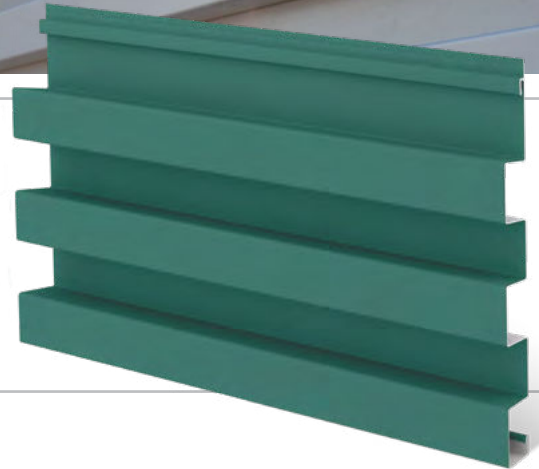
Detail of HC-16 Panel Interlock

Berridge BR-12 Panel

WALL AND FASCIA PANEL SYSTEM



The Berridge BR-12 Panel is a metal wall panel designed for horizontal and vertical wall applications. This bold concealed fastener panel interlocks with the Berridge HC-16, HS-8, HS-12, HR-4, and HR-16 wall panels to provide endless design possibilities.



Materials

24 and 22 Gauge Steel
0.032 and 0.040 Aluminum

Specifications

Uses: Wall, Fascia, Screen Wall, Berridge Fencing System

Coverage: 12"

Finishes: Smooth

Fasteners: Concealed

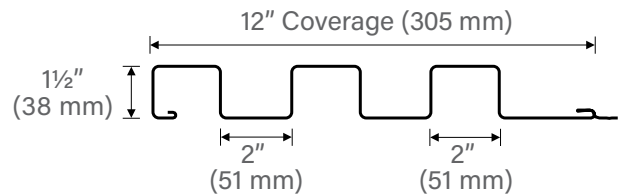
Applications: Vertical on fencing; horizontal or vertical over open framing or solid sheathing (see page 41 for fencing information)

Pattern: 1 1/2" height and 2" rib with 2" reveal

ASTM Tests

- ASTM E-1592 wind resistance tested*
- Wind and water resistance tested (see page 9 for details)
 - ASTM E-331*
 - ASTM E-283*

Florida Product approved*



Installation

- Panel is available from the factory in continuous lengths to a maximum of 40'
- Interlocks with HC-16, HS-8, HS-12, HR-4, and HR-16 panels

Note: Unless otherwise noted, all testing is for steel only.

* Approved for steel and aluminum.



Detail of BR-12 Panel Interlock

Berridge Vee-Panel

WALL, SOFFIT, CEILING, AND FASCIA PANEL SYSTEM



The Berridge Vee-Panel is a versatile and maintenance-free panel available in smooth or wood grain embossed finishes with a vented option.



Materials

24 and 22 Gauge Steel

Specifications

Uses: Wall, Soffit, Ceiling, Fascia, Screen Wall, Berridge Fencing System

Coverage: 12 3/4"

Finishes: Smooth, optional wood grain

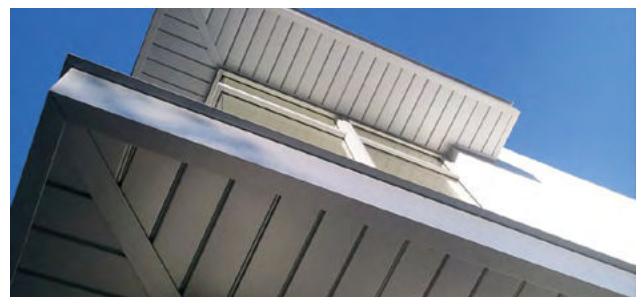
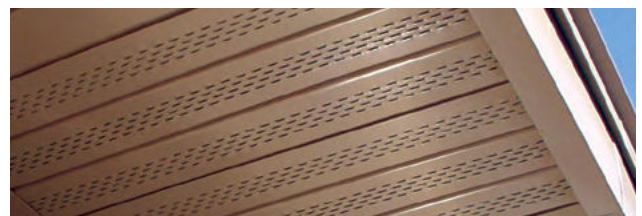
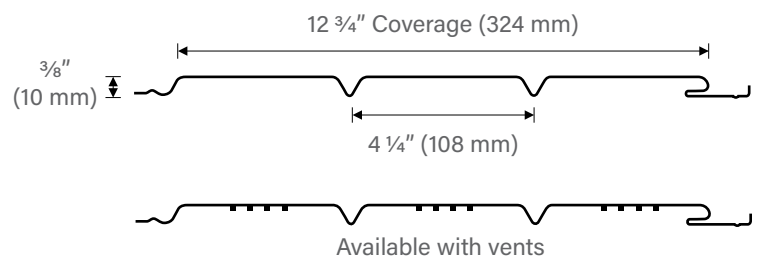
Fasteners: Concealed

Applications: Vertical over open framing or solid sheathing (see page 41 for fencing information)

Pattern: 4 1/4" between grooves, optional venting

Installation

- Panel is available from the factory in continuous lengths up to a maximum of 40'.
- Vented option provides 6.46 square inches of Net Free Vent Area (NFVA) per linear foot of panel. BMC does not recommend vented products in applications subject to aggressive atmospheres, marine environments, or high humidity due to the corrosive nature of these environments on raw edges of steel.



Pictured Above
Project: Jones 13 Living
Architect: Holland Basham Architects
General Contractor: Darland Corporation
Installing Contractor: Scott Enterprises, Inc.
Color: Zinc Grey

Pictured Right - Top Vented Example
Pictured Right - Bottom
Project: 21st Montana
Architect: William Hefner
General Contractor: Pacific Cove Development
Installing Contractor: Barkley Sheet Metal
Color: Zinc-Cote™

Berridge FW-1025 & FW-12 Panels

WALL, SOFFIT, CEILING, AND FASCIA PANEL SYSTEM



The Berridge FW-1025 and FW-12 Panels can be installed on wall, soffit and liner applications. Additionally, the panel can be ordered smooth, with vee-grooves, striated, vented, or with a stucco embossed texture that allows for countless design options.

Materials

24 and 22 Gauge Steel
0.032 and 0.040 Aluminum

Specifications

Uses: Wall, Soffit, Ceiling, Fascia, Screen Wall
Coverage: FW-1025: 10 1/4"; FW-12: 12"
Finishes: Smooth, optional stucco embossed
Fasteners: Concealed
Applications: Vertical over open framing or solid sheathing
Pattern: Vee-grooves, smooth, striations, or venting
Optional: Seam lock feature

ASTM Tests

- ASTM E-1592 wind resistance tested*
- Wind and water resistance tested
 - ASTM E-331*
 - ASTM E-283*

Florida Product approved*

Miami-Dade approved

Texas Department of Insurance listed*

Note: Unless otherwise noted, all testing is for steel only.

* Approved for steel and aluminum.

Pictured Above

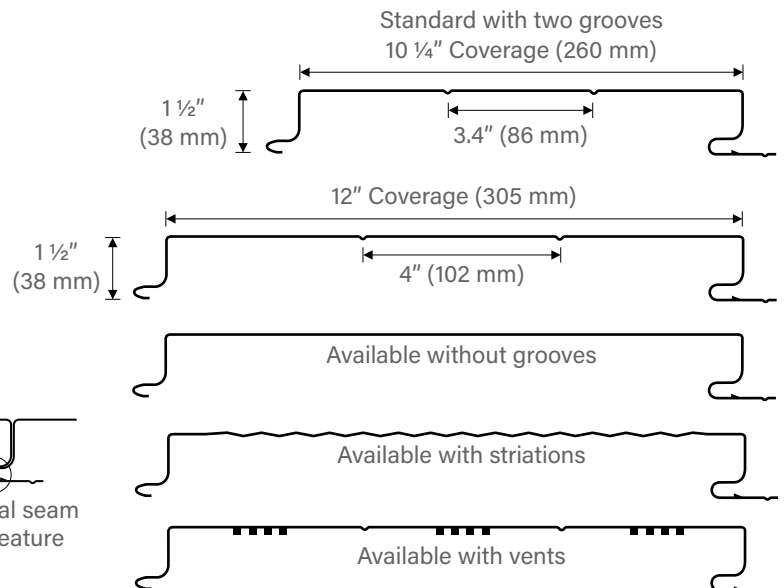
Project: El Franco Community Center

Architect: Auto Architecture

General Contractor: Frost Construction

Installing Contractor: R.W. Honea Sheet Metal, Inc.

Color: Champagne



Installation

- Panel is available from the factory in continuous lengths up to a maximum of 40'.
- Vented option provides 7.79 square inches of Net Free Vent Area (NFVA) per linear foot. BMC does not recommend vented products in applications subject to aggressive atmospheres, marine environments, or high humidity due to the corrosive nature of these environments on raw edges of steel.

Berridge L-Panel

WALL, SOFFIT, CEILING, AND FASCIA PANEL SYSTEM



The Berridge L-Panel is a versatile and maintenance-free panel for use on soffit, ceilings, or fascia. The smooth, stucco embossed, and vented options allow this panel to be used throughout a project for many different applications.



Materials

24 and 22 Gauge Steel
0.032 Aluminum

Specifications

Uses: Soffit, Ceiling, Fascia, Screen Wall
Coverage: 11 5/8"
Finishes: Smooth, optional stucco embossed
Fasteners: Concealed
Applications: Vertical over open framing or solid sheathing
Pattern: Vee-grooves, smooth, or venting

ASTM Tests

- ASTM E-1592 wind resistance tested

Florida Product approved

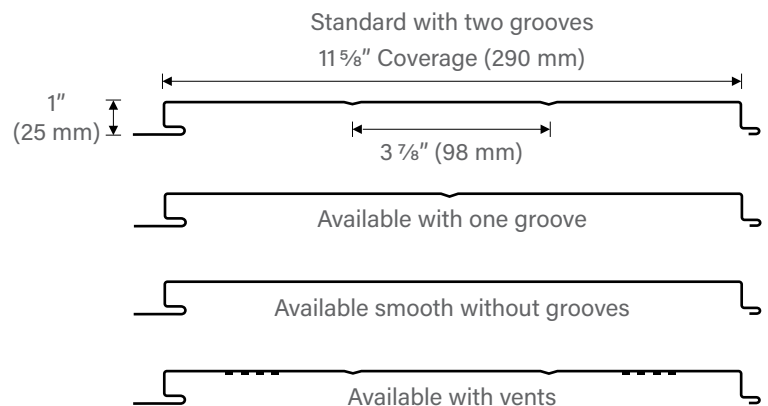
Miami-Dade approved

Texas Department of Insurance listed

Note: Unless otherwise noted, all testing is for steel only.
* Approved for steel and aluminum.

Pictured Above

Project: Bob Mills Furniture
General Contractor: Fulcrum Construction, LLC
Installing Contractor: Superior Roofing
Color: Zinc-Cote™



Installation

- Panel is available from the factory in continuous lengths up to a maximum of 40'.
- May be site-formed using the Berridge FP-16 Roll Former.
- Vented option provides 5.19 square inches of Net Free Vent Area (NFVA) per linear foot of panel. BMC does not recommend vented products in applications subject to aggressive atmospheres, marine environments, or high humidity due to the corrosive nature of these environments on raw edges of steel.

Berridge B-6 Panel

WALL, SOFFIT, CEILING, AND FASCIA PANEL SYSTEM



The Berridge B-6 Panel is used for wall, soffit, ceiling, and fascia. It can be installed over open framing or solid sheathing providing an extruded vee-groove pattern.



Materials

24 Gauge Steel

Specifications

Uses: Wall, Soffit, Ceiling, Fascia, Screen Wall, Berridge Fencing System

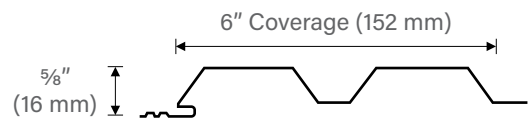
Coverage: 6"

Finishes: Smooth

Fasteners: Concealed

Applications: Vertical over open framing or solid sheathing (see page 41 for fencing information)

Pattern: Extruded vee-groove



ASTM Tests

- ASTM E-330 wind resistance tested

Installation

- Panel is available from the factory in continuous lengths up to a maximum of 40'
- Panel may be used on curved walls but the panel itself does not curve. Consult the Berridge technical department for installation details at technical@berridge.com.

Pictured Above

Project: Post S. Lamar

Architect: LRK Architects

General Contractor: Rampart Construction

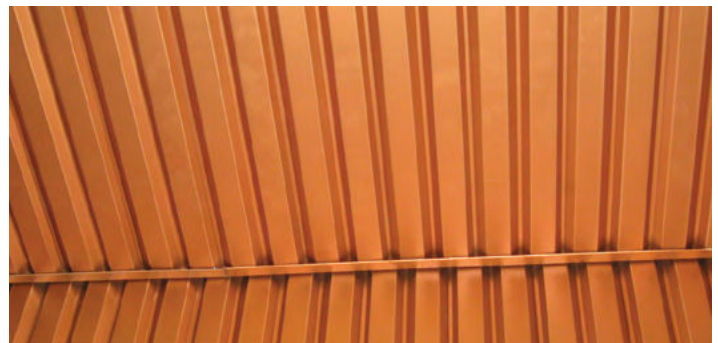
Installing Contractor: Greater Dallas

Roofing, LLC

Color: Terra-Cotta

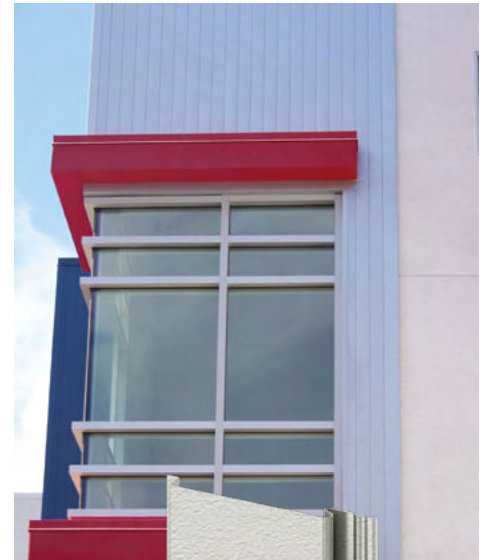
Pictured Right

Interior Installation Example



Berridge Flush Seam Panel

WALL, SOFFIT, CEILING, AND FASCIA PANEL SYSTEM



The Berridge Flush Seam Panel has a stucco embossed finish providing a soft, uniform reflectivity and an overall flat appearance on wall, soffit, ceiling, or fascia. Also available in optional wood grain texture.



Standard Stucco Embossed



Materials

24 Gauge Steel

Specifications

Uses: Wall, Soffit, Ceiling, Fascia, Screen Wall, Berridge Fencing System

Coverage: 3 ⁷/₈"

Finishes: Stucco embossed, optional wood grain

Fasteners: Concealed

Applications: Vertical over open framing or solid sheathing (see page 41 for fencing information)

ASTM Tests

- ASTM E-330 wind resistance tested
- ASTM E-283 air leakage tested

Florida Product approved

Pictured Above

Project: Corradi Arms Condominiums

Architect: La Canada Design Group

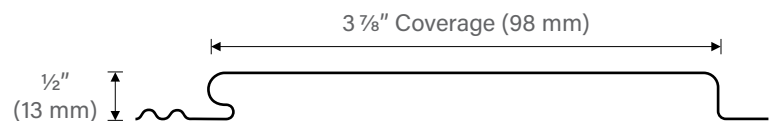
General Contractor: CARR Construction

Installing Contractor: Pan Pacific Metals, Inc.

Color: Royal Blue and Preweathered Galvalume®

Pictured Right

Interior Installation Example



Installation

- Panel is available from the factory in continuous lengths up to a maximum of 40'.
- Panel may be used on curved walls but the panel itself does not curve. Consult the Berridge technical department for installation details at technical@berridge.com.



Berridge Thin-Line Panel

WALL, SOFFIT, CEILING, AND FASCIA PANEL SYSTEM



The Berridge Thin-Line Panel is a prefinished metal panel with a channel drain interlock that offers an array of design possibilities.



Materials

24 Gauge Steel

Specifications

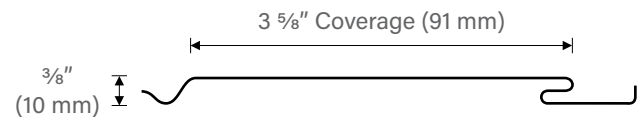
Uses: Wall, Soffit, Ceiling, Fascia, Screen Wall, Berridge Fencing System

Coverage: 3 5/8"

Finishes: Smooth, optional wood grain, or stucco embossed

Fasteners: Concealed

Applications: Vertical over open framing or solid sheathing (see page 41 for fencing information)



ASTM Tests

- ASTM E-330 wind resistance tested

Florida Product approved

Installation

- Panel is available from the factory in continuous lengths up to a maximum of 40'.
- Panel includes a channel drain interlock.
- May be site formed in continuous lengths with the Berridge TL-6 Roll Former.

Pictured Above

Project: Sarah's Circle

Architect: Perkins + Will

General Contractor: Summit Design & Build

Installing Contractor: Metalmaster Roofmaster

Colors: Parchment, Zinc Grey, & Charcoal Grey

Pictured Right

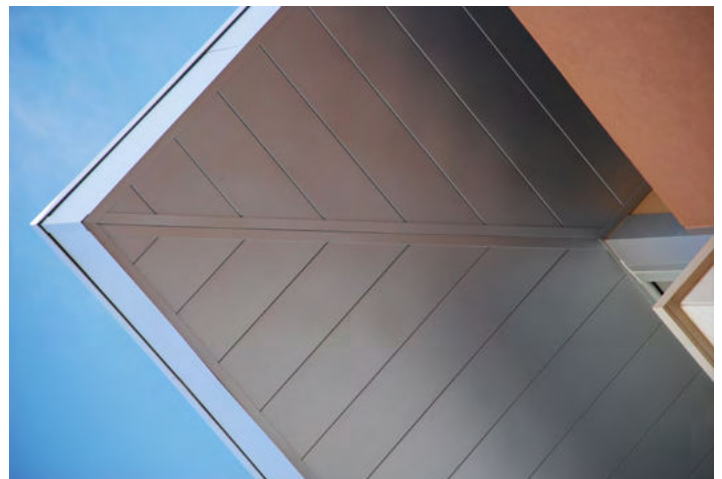
Project: Scottsdale Crossing

Architect: Nelsen Partners

General Contractor: Whiting Turner

Installing Contractor: Total Metals

Color: Zinc-Cote™



Berridge Double-Rib Panel

EXPOSED FASTENER PANEL SYSTEM



The Berridge Double-Rib Panel is an exposed fastener panel that provides a traditional appearance and is ideal for residential or utility applications over solid sheathing.



Materials

24 Gauge Steel

Specifications

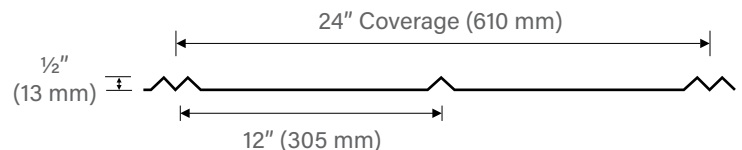
Uses: Roof

Coverage: 24"

Finishes: Smooth

Fasteners: Exposed

Applications: Solid sheathing



UL Classification

- UL-90 wind resistance rated
- UL-2218 impact resistance rated
- UL-790 fire resistance rated

Florida Product approved

Installation

- Panel is available from the factory in continuous lengths up to a maximum of 40'!

Pictured Above

Project: Morgan Stanley Building
Architect: KP Studio Architects
General Contractor: Edwards Construction Services
Installing Contractor: Lodi Metals
Color: Acrylic-Coated Galvalume®

Pictured Right

Project: Ruby Hardson Building
Architect: KP Studio Architects
General Contractor: Edwards Construction Services
Installing Contractor: Lodi Metals
Color: Forest Green

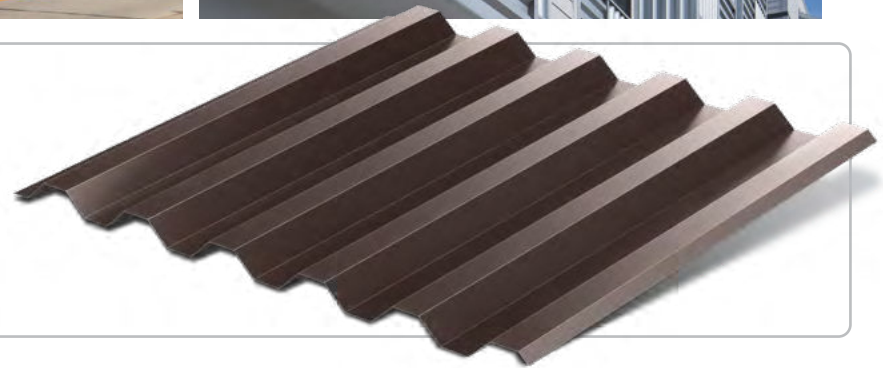


Berridge Deep-Deck Panel

EXPOSED FASTENER PANEL SYSTEM



The Berridge Deep-Deck Panel is a corrugated panel with structural properties that is installed with exposed fasteners horizontally or vertically.



Materials

24 and 22 Gauge Steel
0.032 and 0.040 Aluminum

Specifications

Uses: Roof, Wall, Soffit, Ceiling, Fascia, Sheathing, Screen Wall
Coverage: 36"
Finishes: Smooth
Fasteners: Exposed
Applications: Vertical or horizontal** over open framing or solid sheathing

UL Classification

- UL-90 wind resistance rated
- UL-790 fire resistance rated
- UL-2218 impact resistance rated

ASTM Tests

- ASTM E-1592 wind resistance tested*
- Wind and water resistance tested
 - ASTM E-1646 tested*
 - ASTM E-1680 tested*

Florida Product approved*

Texas Department of Insurance listed*

Note: Unless otherwise noted, all testing is for steel only.

* Approved for steel and aluminum.

** Horizontal on wall applications only.



Installation

- Panel is available from the factory in continuous lengths up to a maximum of 40'.
- Structural properties allow it to be utilized as a sheathing option.

Pictured Above

Project: NOBAY Village

Architect: WMB-ROI Architecture

General Contractor: RODDA Construction, Inc.

Installing Contractor: CA Systems

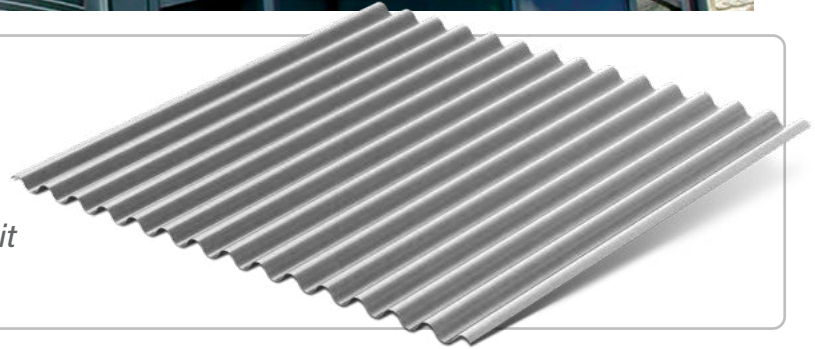
Color: Acrylic-Coated Galvalume®

Berridge S-Deck Panel

EXPOSED FASTENER PANEL SYSTEM, STRAIGHT OR CURVED



The Berridge S-Deck Panel is a corrugated structural metal panel which can be installed horizontally or vertically with exposed fasteners. The S-Deck Panel may be factory curved making it ideal for use over covered walkways and shelters.



Materials

24 and 22 Gauge Steel
0.032 and 0.040 Aluminum

Specifications

Uses: Roof, Wall, Soffit, Ceiling, Fascia, Sheathing, Screen Wall

Coverage: 32" and 34 2/3"

Finishes: Smooth

Fasteners: Exposed

Applications: Vertical or horizontal** over open framing or solid sheathing

Optional: Factory curved for limited applications

UL Classification

- UL-790 fire resistance rated
- UL-2218 impact resistance rated

ASTM Tests

- ASTM E-1592 wind resistance tested*

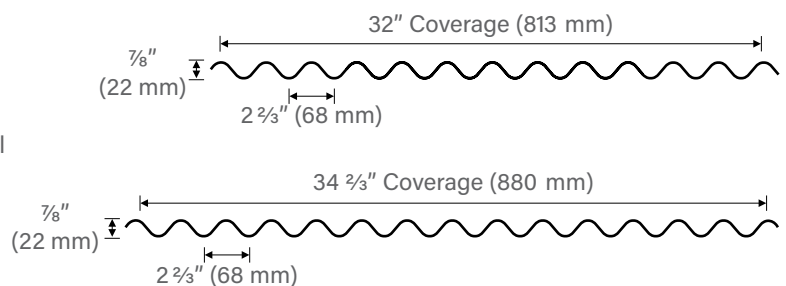
Florida Product approved*

Texas Department of Insurance listed*

Note: Unless otherwise noted, all testing is for steel only.

* Approved for steel and aluminum.

** Horizontal on wall applications only.



Installation

- Panel is available from the factory in continuous lengths up to a maximum of 40'.
- Structural properties allow it to be utilized as a sheathing option.

Factory Curved S-Deck Installation Requirements

- Available in 32" exposure panels only.
- Lapping of two corrugations on panel side lap is recommended.
- Exposure: 29 1/2" with two laps; 32" with one lap.
- Add 6" to 8" extra to all panel lengths.
- 5' Minimum radius (10' minimum radius for 22 gauge).

Pictured Above

Project: Dell Diamond

Architect: 360 Architecture

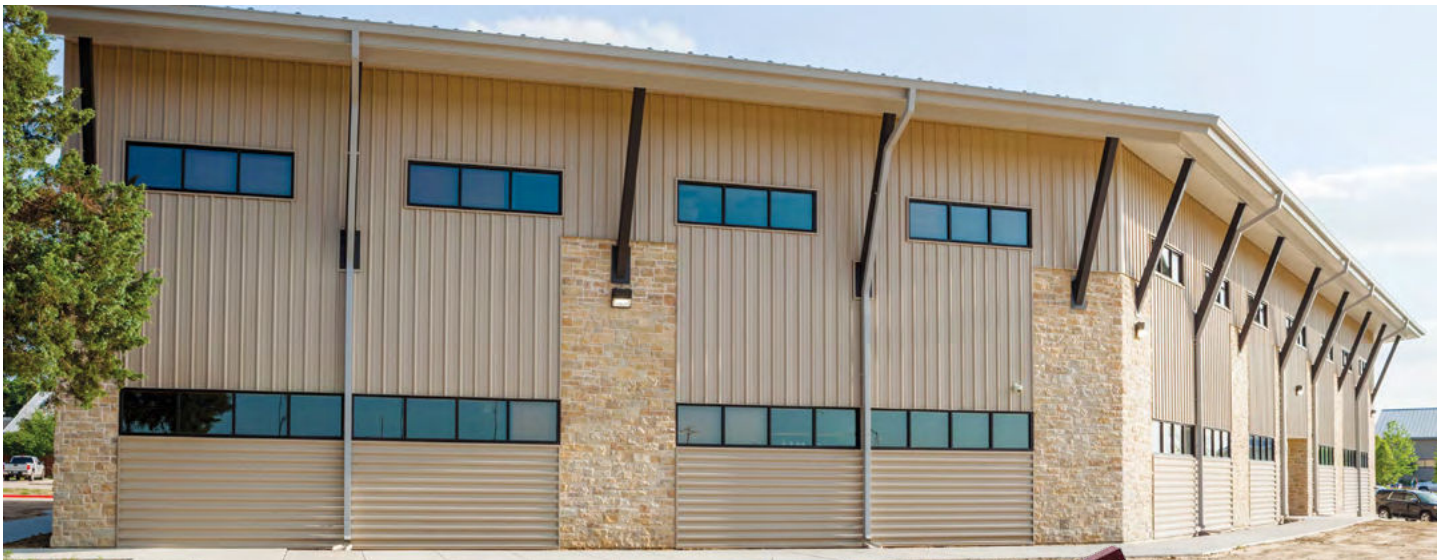
General Contractor: Chasco Contracting

Installing Contractor: Brinkman Roofing

Color: Lead-Cote™

Berridge "M" & "R" Panels

EXPOSED FASTENER PANEL SYSTEM



The Berridge "M" and "R" Panels provide 36" of coverage for vertical and horizontal applications with exposed fasteners.



Materials

24 and 22 Gauge Steel
0.032 Aluminum

Specifications

Uses: Roof, Wall, Soffit, Ceiling, Fascia, Mansard, Sheathing, Screen Wall
Coverage: 36"

Finishes: Smooth corrugated

Fasteners: Exposed

Applications: Vertical or horizontal** over open framing or solid sheathing

UL Classification

- UL-90 wind resistance rated
- UL-2218 impact resistance rated
- UL-790 fire resistance rated

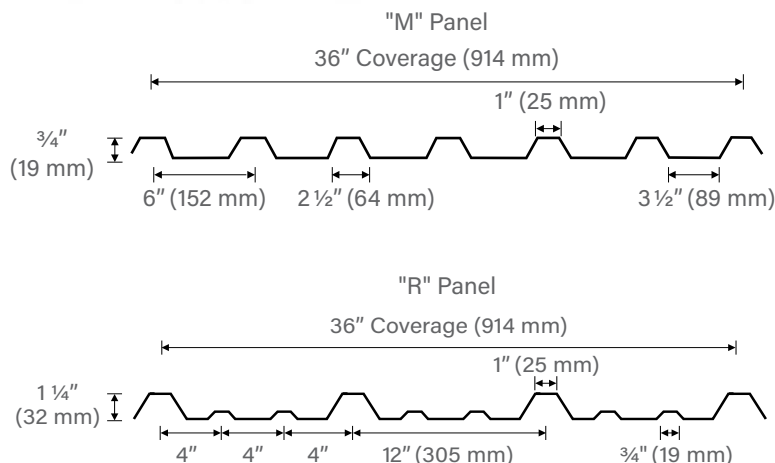
Florida Product approved

Installation

- Panel is available from the factory in continuous lengths up to a maximum of 40'.
- Structural properties allow it to be utilized as a sheathing option.

Note: Unless otherwise noted, all testing is for steel only.

** Horizontal on wall applications only.



Pictured Above

Project: Liberty Christian School

Architect: FJLC & Associates

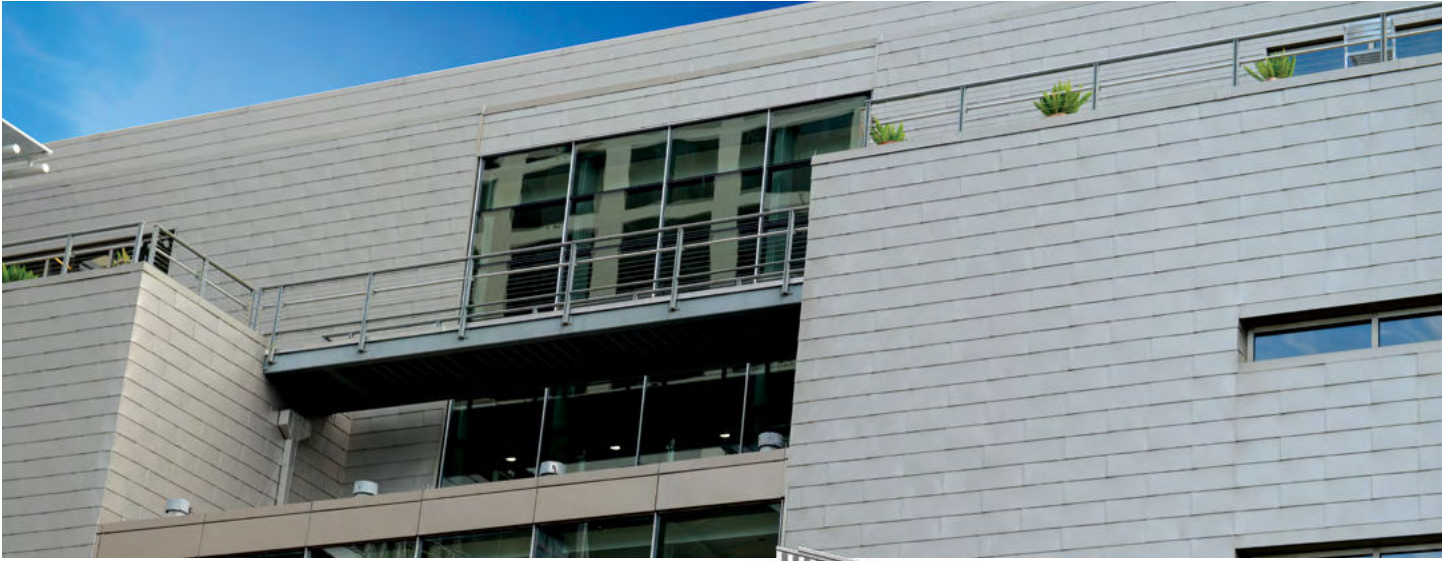
General Contractor: Joeris General Contractors

Installing Contractor: Roof Management Services, Inc.

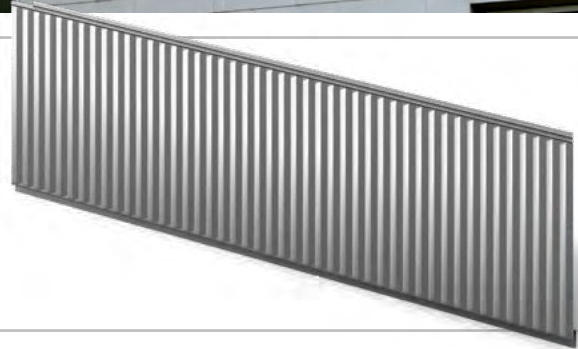
Color: Sierra Tan

Berridge Fluted Fascia

SPECIALTY APPLICATION SYSTEM



The Berridge Fluted Fascia interlocking panels provide a fluted texture for large expansive walls, fascia, or steep mansards. The interlocking feature increases wind resistance and allows for multiple applications.



Materials

24 Gauge Steel

Specifications

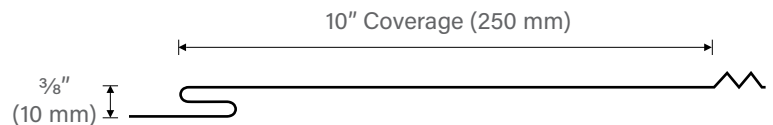
Uses: Walls, Fascia, Steep Mansards

Coverage: 34½" wide and 10" tall

Finishes: Fluted

Fasteners: Concealed

Applications: Horizontal over solid wood sheathing



ASTM Tests

- ASTM E-330 wind resistance tested

Florida Product approved

Installation

- Panel is available from the factory in full square quantities of 42 panels per square.
- Interlocking Panel.
- Install horizontally from the top left of wall working down and right.
- Mansards must be 45° or more.

Pictured Above

Project: Austin Convention Center
Architect: Larry Speck
General Contractor: Spaw Maxwell
Installing Contractor: Now Specialties, Inc.
Color: Champagne

Pictured Right

Project: Scottsdale Crossing
Architect: Nelsen Partners
General Contractor: Whiting Turner
Installing Contractor: Total Metals
Color: Zinc-Cote™



Berridge Curved Flat Seam Panel

SPECIALTY APPLICATION SYSTEM



The Berridge Curved Flat Seam Panel is a prefinished flat seam metal panel system that uses concealed fasteners to create a smooth, flat, uniform look.



Materials

24 Gauge Steel

Specifications

Uses: Fascia

Coverage: 8"

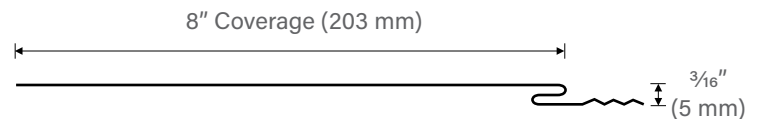
Finishes: Smooth

Fasteners: Concealed

Applications: Curved over solid sheathing

Installation

- Panel is available from the factory in continuous lengths up to a maximum of 40'.
- Hand curved over solid sheathing.
- Minimum radius is 2' 0".



Pictured Above

Project: Planet Ford

Architect: Gant Architects

General Contractor: Tim Cerminar

Installing Contractor: Underwood Sheet Metal

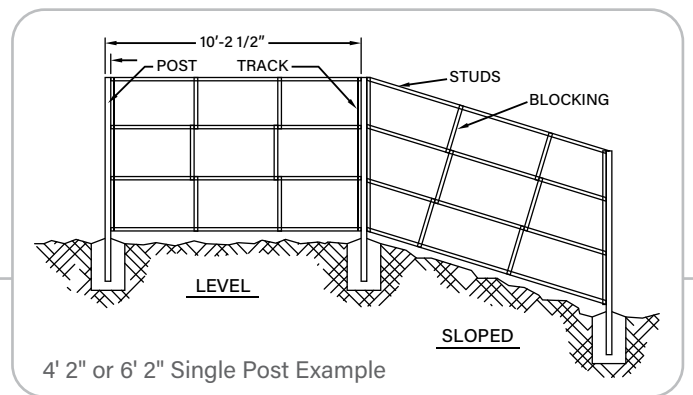
Color: Acrylic-Coated Galvalume®

Berridge Architectural Privacy Fence

FENCE SYSTEM



The Berridge Architectural Privacy Fencing utilizes Berridge's Spaceframe metal studs, track and blocking combined with a wide selection of factory produced Berridge panels to create maintenance free fences that compliment any design.



Materials

24 Gauge Steel Spaceframe Components
16 Gauge Galvanized Steel Posts

Specifications

Uses: Fencing
Fence Heights: 4' 2", 6' 2", 8' 2" and 10' 2"
Panel Widths: Vary by panel choice. Available in nine Berridge 24 gauge panels: HS-8 and HS-12 Panels, HR-16 Panel, HC-16 Panel, BR-12 Panel, Vee-Panel, B-6 Panel, Flush Seam Panel, or Thin Line Panel
Finishes: Vary by panel choice
Fasteners: Interlock with concealed fasteners

Features:

- Fire resistant and termite proof.
- High strength, all steel construction with higher wind rating than alternate products.
- Permanent: Will not rot, fade, crack, or split.
- 100% recyclable, produced from 32.9% pre-consumer and post-recyclable material.
- Limited wood grain and stucco embossing available.

Installation

- Posts are spaced 10' 2 1/2" O.C. for single posts or 10' 5" O.C. for double posts, in lieu of 8 feet O.C. with wood posts.
- Vertical interlocking panels with concealed fasteners.
- Can be installed on level or sloped applications.



HS-8 & HS-12 Panels

HR-16 Panel

HC-16 Panel

BR-12 Panel



Vee-Panel

B-6 Panel

Flush Seam Panel

Thin Line Panel

Berridge Spaceframe Building System

BUILDING SYSTEM



The Berridge Spaceframe Building System components provide a termite proof, fire resistant, and a stronger option over wood materials. This system can be used with metal roofing, siding, or any other standard building material. It is lightweight, will not mold or rot, and is composed of recyclable material.

Materials

24 and 16 Gauge Steel

Specifications

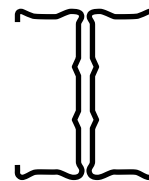
Uses: Framing

Installation

- Consult www.berridge.com for details



24 GA Studs
3 1/2" X 1 1/2"



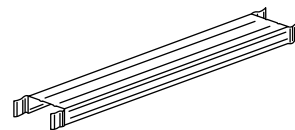
Double Stud
Assembly



16 GA
Cee-Channel
2 1/2" X 8"



24 GA Track
3 9/16" X 1 9/16"



24 GA Blocking
3 1/2" X 24"

	PHYSICAL PROPERTIES					GROSS PROPERTIES						
	Thickness (in)	Depth (in)	Flange (in)	Lip (in)	Weight (lb/ft)	Ag (in ²)	Ix (in ⁴)	Sx (in ³)	Iy (in ⁴)	Sy (in ³)	rx (in)	ry (in)
Single Stud	0.024	3.5	1.450	---	0.535	0.157	0.252	0.155	0.043	0.039	1.265	0.526
Double Stud	0.024	3.5	1.450	---	1.07	0.31491	0.504	0.309	0.149	0.097	1.265	0.689

	TORSIONAL PROPERTIES			FULL BRACED PROPERTIES & ALLOWABLE STRENGTH						
	J (in ⁴)	Cw (in ⁶)	Xo (in)	Ae (in ²)	Ix (in ⁴)	Sx (in ³)	Tension (lbs)	Moment (lbs-ft)	Shear (lbs)	
Single Stud	0.00003023	0.0715	-1.045	0.105	0.252	0.155	3771	309	1171	
Double Stud	0.00006046	0.14307	0.00	0.21001	0.504	0.309	7542	618	2343	

24-Gauge & 16-Gauge Framing Member Components		Weight/LF	A(in ²) (Full)	I (Effective) in ⁴		Allow. Moment (in. - kips)		Allow. Shear (kips)
				T.I.C.	B.I.C.	T.I.C.	B.I.C.	
Hat Section Purlin 24-Gauge		0.66 lbs	.1900	.0665	.0679	1.61	1.77	1.01
Framing Section 24-Gauge		.066 lbs	.1900	.0759	.0866	1.80	2.26	1.08
Channel Section 24-Gauge		0.48 lbs	.1380	.0530	.0556	1.15	1.21	1.08
Furring Channel 24-Gauge		0.35 lbs	.1030	.0180	.0180	0.78	0.86	0.53
High Purlin 16-Gauge		1.28 lbs	0.422	.151		5.74		2.71
Low Purlin 16-Gauge		0.86 lbs	0.242	.017		1.51		0.61
Angle 1 1/2" x 2" 16-Gauge		0.73 lbs	0.203	.084	.029	1.78	0.56	1.31
Channel 4" x 2" 16-Gauge		1.98 lbs	0.501	1.22		17.7		3.76
Channel & Zee Purlin 4" x 2 1/2" 16-Gauge		2.19 lbs	0.557	1.42		18.4		3.84
Channel 6" x 2" 16-Gauge		2.40 lbs	0.621	3.15		30.6		3.45
Channel & Zee Purlin 6" x 2 1/2" 16-Gauge		2.60 lbs	0.677	3.61		31.8		3.20
Channel 8" x 2" 16-Gauge		2.60 lbs	0.737	6.43		45.0		2.36
Channel & Zee Purlin 8" x 2 1/2" 16-Gauge		2.81 lbs	0.797	7.09		47.7		2.36

Notes for 24 GA (0.60 mm) & 16 GA (1.52 mm) shapes:

1. Values based on 2007 North American Specification for the Design of Cold-Formed Steel Structural members, with compression flange braced against lateral buckling.
2. Net section properties are used for resisting moment determination and allowable shear loads.
3. Minimum yield strength = 40 ksi for 24 gauge shapes and 50 ksi for 16 gauge shapes (galvanized steel material).

4. E = 29,500 ksi.
5. Values are for upward and downward loads.
6. T.I.C. = Top in compression
7. B.I.C. = Bottom in compression

CORPORATE HEADQUARTERS

2610 Harry Wurzbach Road
San Antonio, TX 78209
(210) 650-3050
(210) 650-0379 fax

CORPORATE PRODUCTION FACILITY

2201 Rudeloff Road
Seguin, TX 78155
(830) 401-5200
(830) 303-0530 fax

CORPORATE TECHNICAL OFFICE

1720 Maury Street
Houston, TX 77026
(713) 223-4971
(713) 236-9422 fax
technical@berridge.com

Technical or Sales Assistance:
(800) 669-0009

Follow us on:



www.Berridge.com

BRANCH OFFICES

BMC SAN ANTONIO

6515 Fratt Road
San Antonio, TX 78218
(210) 650-3050
(210) 650-0379 fax

BMC HOUSTON

1720 Maury Street
Houston, TX 77026
(713) 223-4971
(713) 236-9422 fax

BMC DALLAS

2015 California Crossing
Dallas, TX 75220
(972) 506-8496
(972) 506-8478 fax

BMC OKLAHOMA CITY

1400 Exchange Avenue
Oklahoma City, OK 73108
(405) 248-7404
(210) 650-0379 fax

BMC DENVER

7505 E. 41st Avenue
Denver, CO 80216
(303) 322-3703
(303) 322-3810 fax

BMC CHICAGO

1175 Carolina Drive
West Chicago, IL 60185
(630) 231-7495
(630) 231-7520 fax

BMC ATLANTA

319 Lee Industrial Boulevard
Austell, GA 30168
(770) 941-5141
(770) 941-7344 fax

BMC KANSAS CITY

1235 Southwest Boulevard
Kansas City, KS 66103
(913) 227-0855
(210) 650-0379 fax

BMC PHOENIX

5717 W. Washington Street
Phoenix, AZ 85043
(602) 385-1237
(210) 650-0379 fax

BERRIDGE CALIFORNIA SALES CORPORATION*

8442 Sultana Avenue
Fontana, CA 92335
(562) 402-2081
(562) 865-7878 fax

BERRIDGE FLORIDA SALES CORPORATION*

8802 Venture Cove
Tampa, FL 33637
(813) 335-4505
(210) 650-3079 fax

* Berridge California and Florida Sales
Corporations are separate entities from
Berridge Manufacturing Company.



Berridge Manufacturing Company is registered with the AIA Continuing Education System (AIA/CES) and is committed to developing quality learning activities in accordance with the CES criteria. Please call Berridge's Staff Architect at (800) 669-0009 to schedule a seminar.

