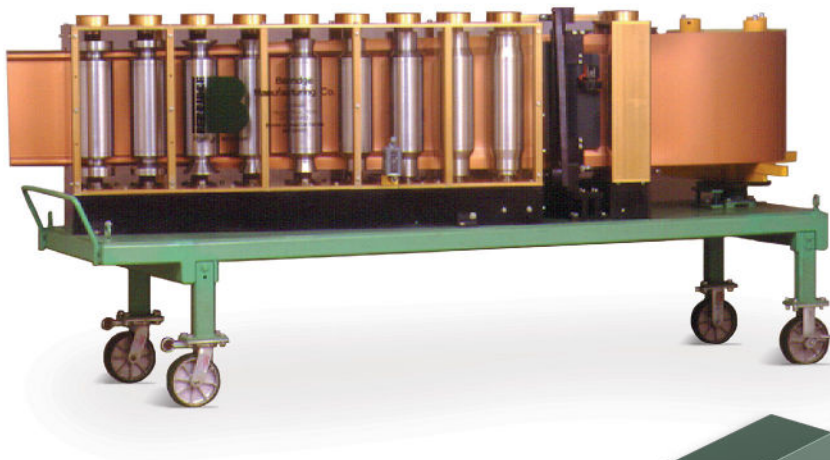


Batten Seam Panel Roll Former

BERRIDGE BP-21



MATERIAL

24 GA Galvalume®

COIL & COVERAGE

Coil Size: Nominal 21" (20 7/8")

Coil Quantity: 131.25 SF of coil per square of coverage

ACCESSORIES

Snap-On Batten Caps: Requires 75 LF of battens per square of coverage

Batten Clips: 50 clips per square (typically at 20" o.c.)

Batten End Caps: 1 per Batten Cap (Eaves/Valleys)

Inner Rib: For thermal expansion on panels over 30'

Expansion Clip: Use with inner rib for panels over 30 ft

Pictured Below

Project: Cooks Hospital

Architect: RTKL Associates, Inc.

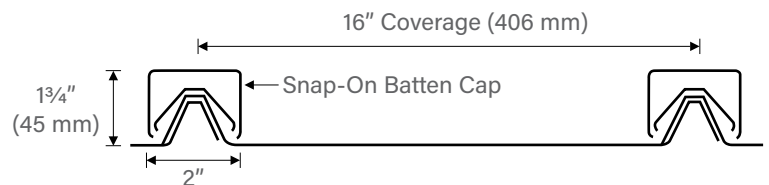
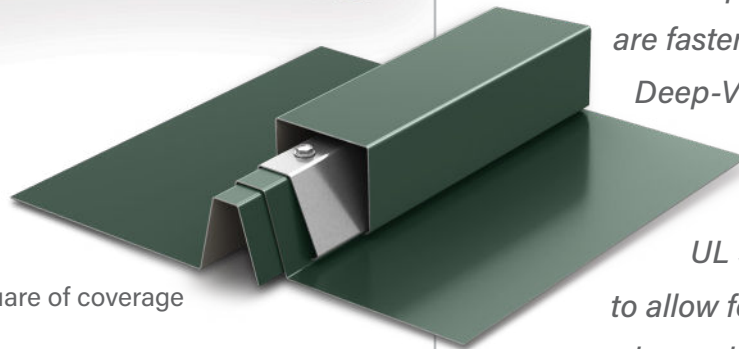
General Contractor: Linebeck Group, LLS

Installing Contractor: Jeff Eubank Roofing Co.

Color: Custom Rich Blue



The Berridge Model BP-21 Portable Roll Former forms continuous-length, eave-to-ridge straight, structural Deep-Vee panels for the Batten Seam System. Snap-on Batten Caps are then snapped on to Batten Clips which are fastened to each Deep-Vee panel rib, typically at 20" O.C. For UL 90 ratings and to allow for thermal expansion on longer panels, use Batten Seam Inner Ribs and Expansion Clips.



SPECIFICATIONS

Mounted on heavy duty 4-wheel table

Width: 34" **Length:** 139" **Height:** 58"

Weight: 3,170 lbs with shipping cover

- 2 HP electric motor - 110V single-phase current
- Operates at 30' per minute
- Built-in uncoiler (up to 2,000 lb coil)
- Chrome coated, heat-treated steel rollers
- Unique side production for ease of operation
- Mechanical guillotine shear
- Accurate-length gauge
- Continuous-length panels, based on coil size
- All sealed bearings
- Coil handling apparatus included