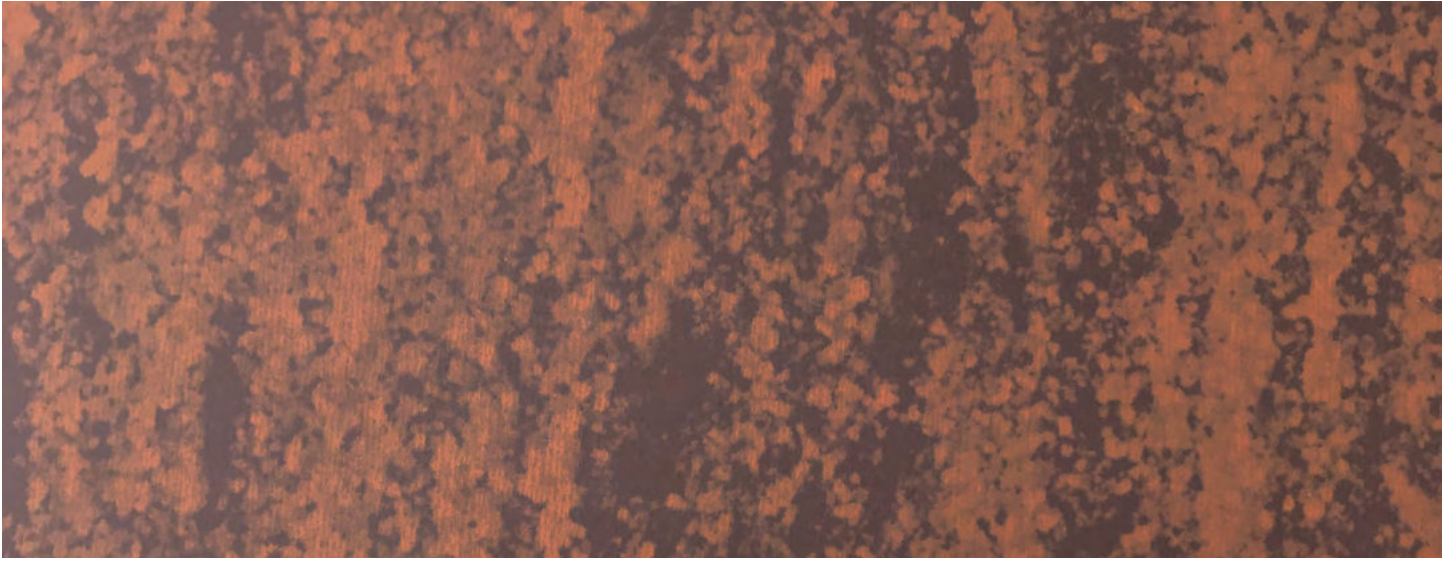


# Berridge COR-TEN AZP® Raw

KYNAR 500® OR HYLAR 5000®



*COR-TEN AZP® Raw is the original painted product that looks like weathered steel without the problems associated with rust runoff from naturally rusted steel. It is designed to give your project an old and weathered appearance. The color combinations in this finish give it a realistic rusted appearance. COR-TEN AZP® Raw looks great from both up close and from a distance.*

## Materials

24 and 22 Gauge Galvalume® coated steel

## Paint System

PVDF Kynar 500® or Hylar 5000®

Solar Reflectivity: .32

Thermal Emissivity: .89

SRI: 34

## Product Information

- Rigorous production control yields a highly uniform, high-quality, protective and decorative coating for long service life at low cost
  - Prepainted GALVALUME® Coated Sheet
  - PVDF paint warranty\* for chalk, peel and fade
- Improved solar reflectivity
- No unsightly storm water runoff staining
- COR-TEN AZP® Raw is a superior alternative to weathering steels in architectural roofing and siding applications
- High recycled content and total recyclability
- COR-TEN AZP® Raw Prepainted Steel Sheet duplicates the color of aged COR-TEN®.
- Prepainted GALVALUME® provides warranted\* protection against perforation.

Notes:

\*See Berridge Galvalume® and Paint Finish warranties.

Finish available in many of Berridge Roof and Wall Panel Systems. Consult Berridge for panel availability.

Not Recommended for horizontal siding applications.

Due to limitation in the printing process, please request actual color chips for actual color viewing.

COR-TEN AZP® is a registered trademark of United States Steel Corporation.

GALVALUME® is an internationally registered trademark of BIEC International Inc. and some of its licensed partners.

COR-TEN® is a registered trademark of United States Steel Corporation and can only be used for products produced by United States Steel Corporation or its licensees.

## BERRIDGE COR-TEN AZP® RAW TESTING SUMMARY CHART

PERFORMANCE	TEST METHOD	GALVALUME® COATED STEEL SHEET
ADHESION	ASTM D 3359	No loss of adhesion
FLEXIBILITY	ASTM D 4145	1T to 3T, no loss of adhesion
PENCIL HARDNESS	ASTM D 3363	HB Minimum
REVERSE IMPACT	ASTM D 2794	3x metal thickness, NTO
ABRASION RESISTANCE	ASTM D 968	65 ± 10 liters per mil
SPECULAR GLOSS	ASTM D 523	Less than 25 at 60°
SALT SPRAY	ASTM B 117	1,000 hours - 1/16" max creep from scribe
HUMIDITY	ASTM D 2247	2,000 hours - no field blisters
DEW CYCLE WEATHEROMETER	ASTM D 3361	1,000 hours - Chalk Rating less than 8

### Typical Test Results

Results may vary depending on substrate and gauge.

The information contained herein is based on tests and reports considered reliable, but is presented without guarantee or responsibility as to the application of correctness of this information or the suitability of our products, whether used singly or in combination with other products.



**CORPORATE HEADQUARTERS**  
2610 Harry Wurzbach Road  
San Antonio, TX 78209  
(800) 669-0009  
[www.Berridge.com](http://www.Berridge.com)