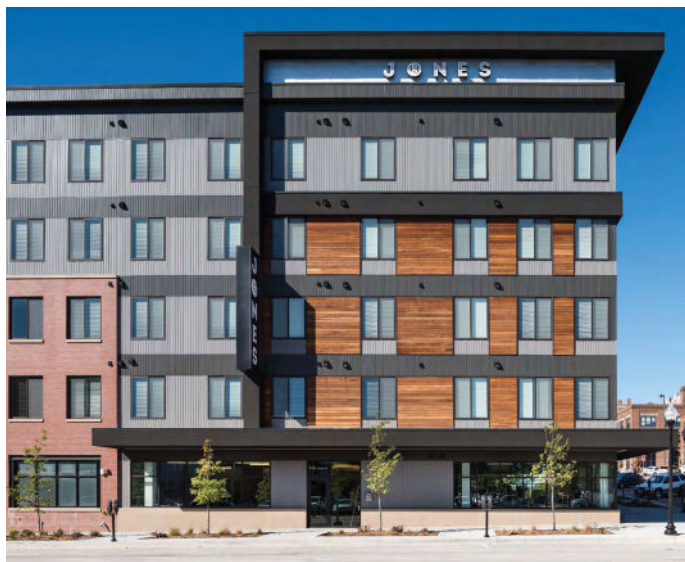


# Berridge Vee-Panel

## WALL, SOFFIT, CEILING, AND FASCIA PANEL SYSTEM



The Berridge Vee-Panel is a versatile and maintenance free panel. The prefinished wall panels can be used over open framing or solid sheathing. The panel can be used throughout a project in many different applications and is available in smooth or wood grain embossed finishes and a vented option.



### Materials

24 and 22 Gauge Steel

### Specifications

Uses: Wall, Soffit, Ceiling, Fascia, Screen Wall, Berridge Fencing System

Coverage: 12 3/4"

Finishes: Smooth, optional wood grain

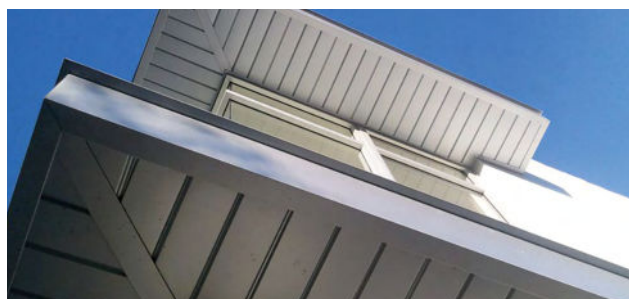
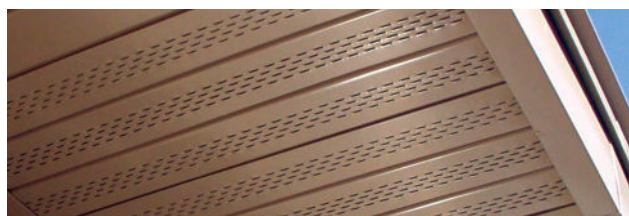
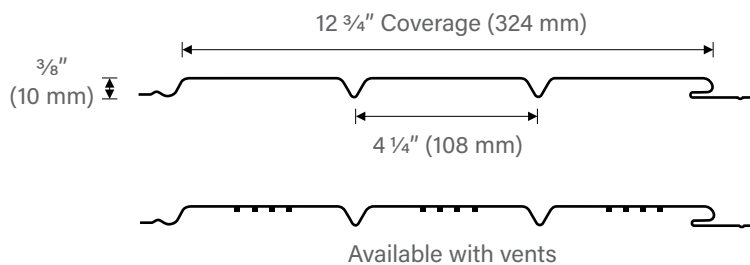
Fasteners: Concealed

Applications: Vertical over open framing or solid sheathing

Pattern: 4 1/4" between grooves, optional venting

### Installation

- Panel is available from the factory in continuous lengths to a maximum of 40'
- Vented option provides 6.46 square inches of Net Free Vent Area (NFVA) per linear foot of panel. (BMC does not recommend vented products in applications subject to aggressive atmospheres, marine environments or high humidity due to the corrosive nature of these environments on raw edges of steel.)



#### *Pictured Above*

Project: Jones 13 Living  
Architect: Holland Basham Architects  
General Contractor: Scott Enterprises, Inc.  
Installing Contractor: Darland Corporation  
Color: Zinc Grey

#### *Pictured Right - Top Vented Example*

*Pictured Right - Bottom*  
Project: 21st Montana  
Architect: William Hefner  
General Contractor: Pacific Cove Development  
Installing Contractor: Barkley Sheet Metal  
Color: Zinc-Cote™

All information subject to change without notice. See website for details, specifications, and Watertightness Warranty requirements.

© Berridge Manufacturing Company 2020 • (800) 669-0009 • www.Berridge.com



**CORPORATE HEADQUARTERS**

2610 Harry Wurzbach Road

San Antonio, TX 78209

(800) 669-0009

[www.Berridge.com](http://www.Berridge.com)